

Age Range: 1-3 Yrs.
 Weight Limit: 40 Lbs.
 Surfaces: Hard, Grass & Carpet
 Speed: 1 MPH
 Colors: Yellow Body
 Blue Seat
 Red Handlebars
 Black Tires

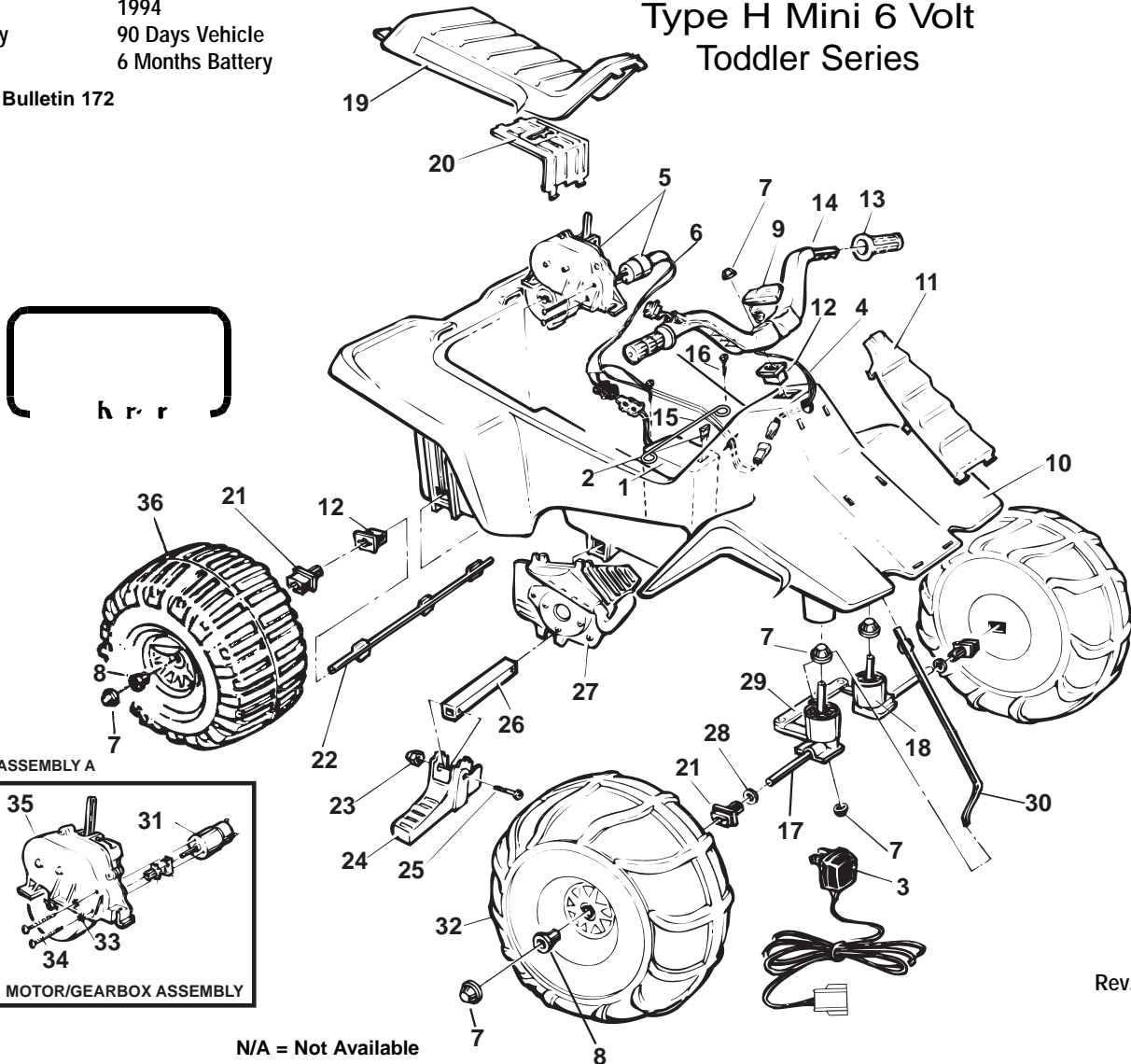
Intro: 1994
 Warranty: 90 Days Vehicle
 6 Months Battery

76089-9993 / 835604AH

LIL SUZUKI®

Type H Mini 6 Volt Toddler Series

Service Bulletin 172



Rev. 09/02/03

N/A = Not Available

Item No.	Description	Part No.	Qty.	Item No.	Description	Part No.	Qty.
1	Battery 6 Volt (4 AH)	0801-0336	1	17	Front Axle	74504-4509	2
2	25 Amp Fuse	0801-0151	1	18	Front Post Bushing	NLA	2
3	6-Volt Charger (4 AH)	00801-0976	1	19	Seat	NLA	1
4	Switch Assm.	78560-2799	1	20	Motor Cover	73560-9489	1
5	#5 Motor/Gearbox Assy.	74504-9519	1	21	Bushing w/Long Extension	78560-2659	4
6	<u>Wiring Harness (main)</u>	<u>73560-9799</u>	1	22	Rear Axle	74504-4539	1
7	.354 Cap Nut	0801-0604	8	23	Acorn Nut N/A	0801-0218	2
8	Wheel Bushing	78560-2679	4	24	Footpeg N/A	77440-2159	2
9	Microphone	74550-9479	1	25	1-1/4" Shoulder Bolt	0801-0304	2
10	Body (N/A)	77440-2109	1	26	Footpeg Support	76940-2179	1
11	Grill	NLA	1	27	False Motor Set (N/A)	80021-0027	1
12	Bushing w/o Extension	74504-2549	3	28	5/16" Washer	0801-0253	2
13	Handgrips	73560-2129	2	29	Steering Linkage	74504-4219	1
14	Handlebar/Switch Assembly	NLA	1	30	Steering Column	76940-4239	1
15	Battery Retainer	74504-4429	1	31	<u>Motor Only</u>	<u>NLA</u>	
16	#8 x 7/8" Trusshead Screw	0801-0228	2	32	<u>Star Washer N/A</u>	<u>0801-0330</u>	2
				33			
				34	<u>Motor Bolt</u>	<u>0801-0269</u>	2
				35	<u>#5 Gearbox Only N/A</u>	<u>72629-9259</u>	1
				37	Rear Wheel N/A	73237-2459	2
				38	Front Wheel N/A	73237-2469	2
PARTS NOT SHOWN							
					Literature Bag	NLA	
					Decal Sheet N/A	73569-0310	1
					Battery Foam Pocket	73560-0401	1

Bold and Underlined parts are to be purchased and installed by Service Centers only. These items may not be sold directly to consumers by Service Centers or Fisher-Price.