

PHILIPS
NORELCO

NIVEA
FOR MEN



**Rechargeable
Cordless Tripleheader Razor**

8020X

Register your product and get support at
www.philips.com/norelco

ENGLISH 4

Congratulations on your purchase and
welcome to Philips Norelco!

To fully benefit from the support that Philips
Norelco offers, register your product at
www.philips.com/norelco

8020X

IMPORTANT SAFETY INSTRUCTIONS

When using an electric razor, basic safety precautions should always be followed, including the following:

Read all instructions before using this appliance.

DANGER

To reduce the risk of electric shock:

1. Do not reach for a charging stand that has fallen into water. Unplug immediately.
2. Charging stand is not for immersion or for use in shower.
3. Do not place or store a charging stand where it can fall or be pulled into a tub or sink. Do not place charging stand in or drop into water or other liquid.
4. Do not use an extension cord with this appliance.
5. Always unplug charging stand from the electrical outlet immediately after using, except when razor is (re)charging.
6. Unplug charging stand before cleaning.

WARNING

To reduce the risk of burns, fire, electric shock, or injury to persons:

1. Close supervision is necessary when this razor is used by, on, or near children or invalids.
2. Use this razor for its intended household use as described in this manual. Do not use attachments not recommended by Philips Electronics North America Corporation.
3. Never operate this razor if it has a damaged cord or plug, if it is not working properly, if it has been dropped or damaged, or dropped into water. For assistance call 1-800-243-3050.

4. Keep the razor and cord away from heated surfaces.
5. Never drop or insert any object into any opening.
6. Do not charge razor or plug in charging stand outdoors or operate where aerosol (spray) products are being used or where oxygen is being administered.
7. Do not use this razor with a damaged or broken comb, as facial injury may occur.
8. Always place razor in stand first, then plug stand into outlet. To disconnect, remove plug from stand from outlet.
9. To prevent possible damage to the cord, do not wrap cord around the charging stand.
10. Never put razor in direct sunlight or store in a pouch at a temperature above 140°F.
11. Razor is water-safe and can be rinsed under running tap water or used in shower. Do not submerge razor in water.

SAVE THESE INSTRUCTIONS

IMPORTANT: The power plug contains a transformer. Do not cut off the power plug to replace it with another plug, as this will cause a hazardous condition.

CAUTION: Keep shaving conditioner out of reach of children. Do not take internally. Avoid contact with eyes. In case of eye contact, thoroughly flush with cold water. If irritation persists, get medical attention.

PHILIPS



45 - DAY MONEY-BACK GUARANTEE

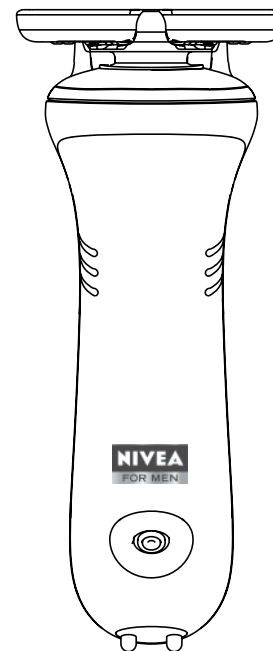
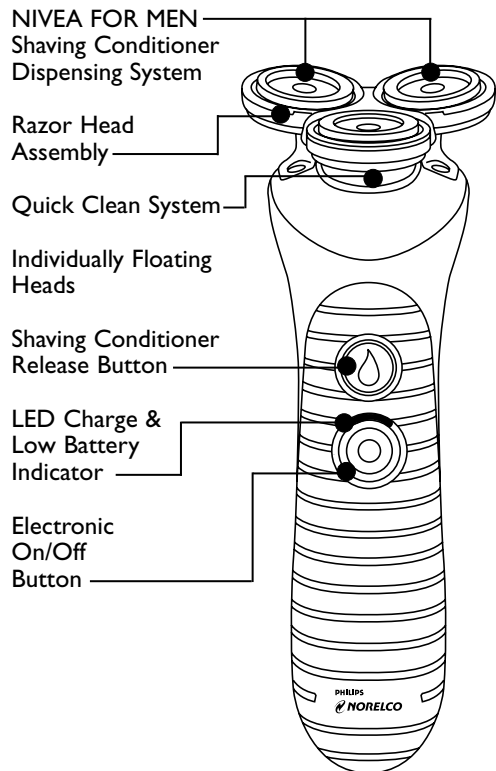
To enjoy the closest and most comfortable shave from your new Philips Norelco Men's Razor, the razor should be used exclusively for 3 weeks. This allows your hair and skin enough time to adapt to the Philips Norelco Shaving System. If, after that period of time, you are not fully satisfied with your Philips Norelco Men's Razor, send the product back along with dated sales receipt and we'll refund you the full purchase price. **The razor must be shipped prepaid by insured mail, insurance prepaid, and have the original sales receipt, indicating purchase price and the date of purchase, enclosed. We cannot be responsible for lost mail.** The razor must be postmarked no later than 45 days from the date of purchase. Philips Norelco reserves the right to verify the purchase price of the razor and limit refunds not to exceed suggested retail price.

To obtain money-back guarantee return authorization form, call 1-800-243-3050 for assistance.

Table of Contents

Features.....	8-9
Important.....	10
Introduction	10
Before First Use.....	10-11
Charging Indications.....	11
Charging Razor.....	11-13
Filling Razor Cartridge	13-14
Recharging	14
Put It To The Test & Shaving Tips.....	14-15
How to Shave With Razor.....	15-17
Cleaning.....	17-20
Replacing Cartridges.....	21
Replacing Razor Head Assembly.....	22
Maintenance	22-23
Storage.....	23
Assistance	24
Accessories	24
Warranty.....	25

Features



NIVEA FOR
 MEN Shaving
 Conditioner Bottle

Automatic
 Worldwide Voltage
 100V to 240V AC

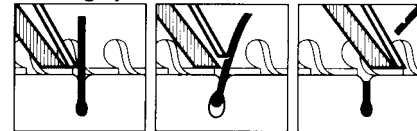
Rechargeable
 Cordless - 8-hour full
 charge for up to 30
 minutes of cordless
 shave time

Charging Stand

Full 2-Year Warranty

45-Day Money-Back
 Guarantee

How the Unique Philips Norelco  Lift and Cut
 Shaving System Makes Close Comfortable:



Groove channels beard
 closer to cutting system

Lifter raises hair

Blade cuts hair which
 then drops below skin level

Important

- ▶ Only use the power plug and the charging stand provided to charge the razor.
- ▶ The power plug transforms 100-240 AC volts to less than 24V DC.
- ▶ An adaptor plug may be necessary for cord usage in some foreign countries. Your new razor will automatically convert internally to work on 100V to 240V AC systems.

Introduction

The NIVEA FOR MEN conditioner dispensing system applies shaving conditioner directly on your skin for a moisturizing and soothing shave. The formula is enriched with vitamins and chamomile to condition your skin for a healthy look.

The Glide Rings on the shaving heads distribute the unique NIVEA FOR MEN shaving conditioner evenly over the skin, offering an even smoother and closer shave, causing less skin irritation and leaving your skin feeling refreshed.

Before First Use

- ▶ Charge and fill the razor before you start using it (see 'Charging' & 'Filling Razor Cartridge' sections).

Important

- ▶ Only use this razor, power plug, charging stand and HS800 NIVEA FOR MEN shaving conditioner to refill or charge razor.

- ▶ For hygienic reasons, always replace the shaving conditioner cartridge each time you start using a new bottle of NIVEA FOR MEN shaving conditioner. A new cartridge is supplied with each new shaving conditioner bottle.
- ▶ Use this appliance for its intended household use as described in this manual.

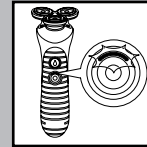
Charging Indications

Low Battery Indicator

- ▶ When the battery is running low, the light burns red during shaving.
- ▶ If you switch the razor off when the battery is low, the red light slowly goes off.

Charging Indicator

- ▶ During charging, the charging light burns green.

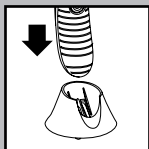


Charging Razor

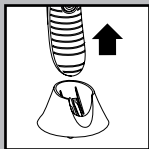
- ▶ Charging or recharging at temperatures below 40°F or higher than 95°F adversely affects lifetime of batteries.
- ▶ Do not charge razor in a pouch.

- ▶ Charging and recharging requires a full 8 hours.
- ▶ A fully charged razor has a shaving time of up to 30 minutes.
- ▶ For hygienic reasons, it is advised that you use a new shaving conditioner cartridge on your razor when starting a new shaving conditioner refill bottle.

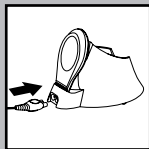
Placing or removing razor from charging stand:



- ▶ Always place razor in stand in an upright position making sure charging contacts in bottom of stand fit into recess in bottom of razor.



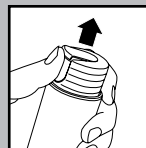
- ▶ Always remove razor from stand by lifting straight up. Do not tilt razor.
- ▶ Do not leave the charging stand with the razor in it continuously plugged into outlet as it would reduce life of batteries. If storing razor in stand, remove the plug from outlet as soon as the razor is fully charged.



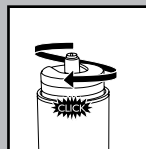
- 1** Connect the small plug into the charging stand and put the power plug into any 100V to 240V AC outlet. Use only the cord and charging stand provided.
- 2** Charging requires a full 8 hours. A fully charged razor has a cordless shaving time of up to 30 minutes.

- 3** Remove the power plug from outlet as soon as the battery is fully charged.

Filling Razor Cartridge



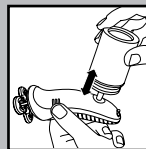
- ▶ Only use NIVEA FOR MEN Shaving Conditioner to refill the shaving conditioner cartridge. Any other lotion may cause damage to your razor.



- 1** Remove the tab of the NIVEA FOR MEN Shaving Conditioner bottle (Model HS800).

- 2** Turn the cap on the shaving conditioner bottle clockwise.

The cap moves down and the shaving conditioner nozzle appears.



- 3** Place the nozzle of the conditioner bottle into the opening of the conditioner cartridge on the back of the razor.

- 4** Move the bottle up and down approximately 5 times to pump the shaving conditioner into the cartridge until you see that the shaving cartridge is full. Do not fill the cartridge beyond the MAX indication.

BE CAREFUL NOT TO OVERFILL SHAVING CARTRIDGE.

- 5** Remove nozzle of the shaving conditioner bottle from shaving conditioner cartridge

and turn the cap counterclockwise until the nozzle is flush with the top of the cap. Replace the tab on top of the shaving conditioner bottle.

Recharging

- 1** Recharging requires a full 8 hours.
- 2** When razor is fully charged, disconnect the charging plug from outlet.

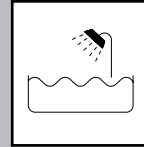
Do not keep charging stand permanently plugged into outlet.

Put It To The Test & Shaving Tips

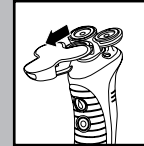
- ▶ **21 Day Trial and Conversion Process.** It is a fact that your skin and beard need time to adjust to a new shaving system.
- ▶ **Use your new razor exclusively for 3 weeks** to fully enjoy the closeness of a Philips Norelco shave.
- ▶ **At first you may not get as close a shave as you expect, or your face may even become slightly irritated.** This is normal since your beard and skin will need time to adjust. Invest 3 weeks and you'll soon experience the full joy of your new razor.
- ▶ **Stick with it!** If you alternate shaving methods during the adjustment period, it may make it more difficult to adapt to the Philips Norelco shaving system.
- ▶ **If you are still not convinced after 21 days,** Philips Norelco will refund you the full

purchase price as long as the request is received within 45 days of purchase.

How To Shave With Razor



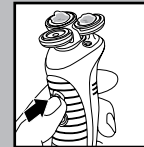
- ▶ This symbol on the razor indicates that the razor can be used in the bath or shower.
- ▶ Make sure the power plug and charging stand do not get wet or near water.



- 1** Make sure razor is charged and filled with NIVEA FOR MEN shaving conditioner (see 'Charging' & 'Filling Razor Cartridge' sections).
- 2** Remove Protective Razor Head Cap from razor by sliding it off from the Razor Head Assembly.

- 3** Wet your face and neck thoroughly with warm water.

NOTE: This razor can be used similar to a razor blade: you can use the razor on a wet face.



- 4** Turn razor ON by pressing the on/off button once.
- 5** Press the shaving conditioner button to apply NIVEA FOR MEN shaving conditioner to your skin. When you release the button, the razor stops dispensing lotion.

The shaving conditioner button only works when the razor is switched ON.

- ▶ If razor does not dispense shaving conditioner, dried shaving conditioner may be blocking the conditioner holes. Thoroughly clean razor (see 'Cleaning' section).

- 6** Gently move the shaving heads over your skin. Shave against the direction of beard growth using both straight and circular motions.

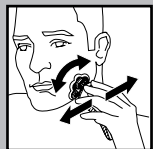
This razor has no hair collection chamber to capture stubble. To prevent stubble from falling, apply sufficient shaving conditioner while shaving.

- 7** While shaving, press the shaving conditioner button frequently to apply more NIVEA FOR MEN shaving conditioner so that the razor keeps gliding smoothly over your face.

The shaving conditioner provides immediate hydrating action and lessens drag or pull against skin.

- 8** Easy does it. Gently press the razor to your skin so the floating heads can follow the contours of your face. **DO NOT** press too hard. Too much pressure can pinch the skin into the combs.

- ▶ For best shaving results, shaving conditioner should be applied frequently.



- ▶ Make sure shaving conditioner is always released from both holes in the razor head assembly. If not, thoroughly clean razor (see 'Cleaning' section).
- ▶ The razor will not perform optimally when used without shaving conditioner on a wet face.

- 9** Turn razor off by pressing the on/off button once.

- 10** Clean razor after EACH use (see 'Cleaning' section).

- 11** Put the Protective Razor Head Cap on the razor when you store it to prevent the shaving heads from getting damaged. Replace Razor Head Assembly (model HS85) once a year for optimal shaving results.

- 12** You may store your razor in the charging stand. Unplug from the outlet when charging is complete.



Cleaning

- ▶ Always clean your razor after each use.
- ▶ Regular cleaning guarantees better shaving results.
- ▶ Never remove or replace Razor Head Assembly while motor is on.
- ▶ Do not apply pressure to combs. Do not touch razor heads with hard objects as this

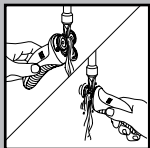
may dent or damage precision-made slotted combs.

- ▶ Do not use razor if combs are damaged or broken. Facial injury may occur.
- ▶ Never dry the shaving unit with a towel or tissue as this may damage razor heads.
- ▶ Do not use abrasives, scourers or liquids such as acetone to clean the appliances.

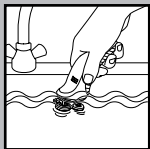
Razor Head Assembly: After Each Use

- ▶ It is recommended that you clean the Razor Head Assembly thoroughly after each use to maintain optimal shaving performance.

- 1** Press the on/off button to turn razor ON.



- 2** Rinse Razor Head Assembly under hot tap water by letting the water run in and around all the openings for at least 30 seconds.



- 3** You can also immerse the Razor Head Assembly in hot water for at least 30 seconds.

Make sure the razor is ON to thoroughly remove any residue.

BE CAREFUL TO TEST WATER FIRST SO AS NOT TO BURN OR SCALD HANDS.

- 4** Turn razor OFF and shake off excess water.

- 5** You can store the razor in the charging stand.

- 6** Put the Protective Razor Head Cap on razor to protect heads.

Note: If lotion build-up has occurred, remove Razor Head Assembly and soak for a few minutes under hot water or a degreasing liquid (e.g. alcohol). Be sure to thoroughly rinse Razor Head Assembly under tap water before using razor.

Razor Head Assembly: Once A Month

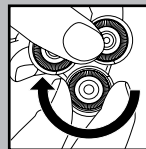
Do not mix up the cutters and combs as the shaving performance may be adversely affected for several weeks before optimal shaving performance is restored.

- 1** Turn razor OFF.

- 2** Remove Razor Head Assembly from razor by pulling Razor Head Assembly straight up from razor.



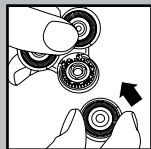
- 3** Using your thumb and forefinger turn the razor head clockwise and lift the comb off of Razor Head Assembly.



- 4** Remove and clean one set of cutters and combs at a time.

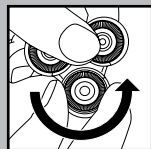
Do not clean more than one cutter and comb at a time, since they are all matching sets. If you accidentally interchange the cutters and combs, it could take several weeks before optimal shaving performance is restored.

- 5** Separate the cutter from the comb and clean with a small brush or rinse clean under hot water.
- 6** Replace the cutter back onto the Razor Head Assembly making sure the blades are pointing upwards.

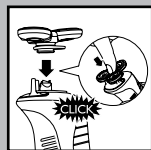


- 7** Place the razor head comb back onto the Razor Head Assembly.

Be sure to replace the comb back into the original razor head before cleaning the next set.



- 8** Turn the razor head counterclockwise until it locks into place.
- 9** Repeat the process for the other two sets of cutters and combs.



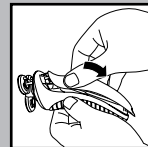
- 10** Replace Razor Head Assembly back on razor and push down (you will hear a click).

The Razor Head Assembly will only fit correctly in one position on razor. Make sure to align the 2 shaving lotion dispensing holes on the Razor Head Assembly with the 2 shaving lotion tubes on the razor.

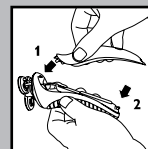
Replacing Cartridges

- ▶ For hygienic reasons, it is recommended to replace the shaving conditioner cartridge each time you start a new shaving conditioner bottle.
- ▶ A new empty cartridge is supplied with each new NIVEA FOR MEN Shaving Conditioner bottle (Model HS800).

Shaving Conditioner Cartridge



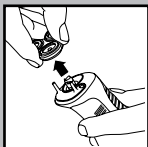
- 1** Remove the shaving conditioner cartridge from the back of razor.



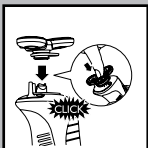
- 2** Insert the hinge at the top of the new shaving conditioner cartridge into the slot in the rim of the razor back (1). Then press the bottom part of the cartridge with your thumb (2) to attach the cartridge to the razor. You will hear a 'click'.
- 3** The shaving conditioner cartridge is now ready to be filled (see 'Filling Razor Cartridge' section).

Replacing Razor Head Assembly

- ▶ Replace the entire Razor Head Assembly once a year for optimal shaving results.
- ▶ Replace damaged or worn Razor Head Assembly with model HS85 Philips Norelco razor heads only.



- 1** Remove Razor Head Assembly from the razor by pulling the Razor Head Assembly straight up away from the razor.



- 2** Place new Razor Head Assembly back on the razor and push down (you will hear a click).

The Razor Head Assembly will only fit correctly in one position on razor. Make sure to align the 2 shaving lotion dispensing holes on the Razor Head Assembly with the 2 shaving lotion tubes on the razor.

This razor has no other user-serviceable parts. For assistance call 1-800-243-3050.

Maintenance

- ▶ Always remove razor from the charging stand before cleaning appliance.
- ▶ Unplug the charging stand. The stand may be wiped clean using a damp cloth.
- ▶ Water from the tap should be on a warm setting to clean any washable parts.

Note: DO NOT place or clean any parts of the charging stand in a dishwasher.

Storage

- ▶ The razor can be placed in the charging stand for safe storage. If storing razor in charging stand, remove the plug from outlet as soon as the razor is fully charged.
- ▶ If appliance will not be used for an extended period of time, it is recommended that you thoroughly clean Razor Head Assembly before storing.
- ▶ Be sure razor is turned off. Remove cord from outlet and charging stand before storing in a safe, dry location where it will not be crushed, banged, or subject to damage.
- ▶ Do not wrap cord around razor or charging stand when storing.
- ▶ Store cord in a safe location where it will not be cut or damaged.
- ▶ Do not keep charging stand permanently plugged into outlet.
- ▶ Do not place or store charging stand where it can fall or be pulled into a tub or sink, water or other liquid while plugged in.
- ▶ During storage, always put the Protective Razor Head Cap on razor to protect heads.



Assistance

- ▶ For assistance, call toll free:

1-800-243-3050
or visit our website:
www.philips.com/norelco

- ▶ Information is available 24 hours a day,
7 days a week.

Accessories

- ▶ **Replacement Razor Head Assembly Model HS85** - For maximum razor performance, replace your Philips Norelco Razor Head Assembly once a year. Razor Head Assembly contains 3 cutters & 3 combs.
- ▶ **NIVEA FOR MEN Shaving Conditioner and Replacement Razor Cartridge HS800** – NIVEA FOR MEN Shaving Conditioner (2.5 fl. oz./75 ml.) and Replacement Razor Cartridge.
- ▶ **Philips Norelco Razor Accessories** may be purchased at a store near you or on our website www.philips.com/norelco

FULL TWO YEAR WARRANTY

Philips Electronics North America Corporation warrants each new Philips Norelco Product, Model 8020X (except cutters, combs and conditioner cartridge) against defects in materials or workmanship for a period of two years from the date of purchase, and agrees to repair or replace any defective product without charge.

IMPORTANT: This warranty does not cover damage resulting from accident, misuse or abuse, lack of reasonable care, the affixing of any attachment not provided with the product or loss of parts or subjecting the product to any but the specified voltage.* Use of unauthorized replacement parts will void this warranty.

PHILIPS ELECTRONICS NORTH AMERICA CORPORATION WILL NOT PAY FOR WARRANTY SERVICE PERFORMED BY A NON-AUTHORIZED REPAIR SERVICE AND WILL NOT REIMBURSE THE CONSUMER FOR DAMAGE RESULTING FROM WARRANTY SERVICE PERFORMED BY A NON-AUTHORIZED REPAIR SERVICE. NO RESPONSIBILITY IS ASSUMED FOR ANY SPECIAL, INCIDENTAL OR CONSEQUENTIAL DAMAGES.

In order to obtain warranty service, simply go to www.philips.com/norelco or call 1-800-243-3050 for assistance. It is suggested that for your protection you return shipments of product by insured mail, insurance prepaid. Damage occurring during shipment is not covered by this warranty.

NOTE: No other warranty, written or oral, is authorized by Philips Electronics North America Corporation.


This warranty gives you specific legal rights, and you may also have other rights which vary from state to state. Some states do not allow the exclusion or limitation of incidental or consequential damages, so the above exclusion and limitations may not apply to you.

* Read enclosed instructions carefully.

Manufactured for:
 Philips Consumer Lifestyle
 A Division of Philips Electronics North America Corporation
 1600 Summer Street – 5th Floor, Stamford, CT 06905-5125



This symbol on the product's nameplate means it is LISTED listed by Underwriters' Laboratories, Inc.

Norelco, Tripleheader, Lift and Cut, Glide Rings and  are Registered Trademarks of Philips Electronics North America Corporation.



is a Trademark of Philips Electronics North America Corporation.

PHILIPS is a Registered Trademark of Koninklijke Philips Electronics N.V.

NIVEA FOR MEN is a Registered Trademark of Beiersdorf AG.
 Beiersdorf North America Inc.
 187 Danbury Road
 Wilton, CT 06897
www.nivea.com