

# BRAUN

# Multipress automatic

## MP 80

Type 4290

**Automatische Saftzentrifuge**

**Automatic Juice Extractor**

**Centrifugeuse automatique**

**Extractor de zumo**

**Extractor de sumos**

**Centrifuga automatica**

**Sapcentrifuge**

**Automatisk saftpresse**

**Automatisk saftsentrifuge**

**Saftpress**

**Automaattinen mehulinko**

**Sokowirówka**

**Αυτόματος αποχυμωτή**

**Автоматическая соковыжималка**

**Автоматична соковижималка**

**عصارة الشراب الاتوماتيكية**

### Deutsch

- 4 Gebrauchsanweisung
- 38, 50 Garantie
- 46 Kundendienst

### English

- 6 Use Instructions
- 38, 50 Guarantee
- 46 Service Centers

### Français

- 8 Mode d'emploi
- 39, 50 Garantie
- 46 Centrales service après-vente

### Español

- 10 Instrucciones de uso
- 39, 50 Garantía
- 46 Servicios de asistencia técnica

### Português

- 12 Instruções para uso
- 40, 50 Garantia
- 46 Centros de serviço

### Italiano

- 14 Istruzioni d'uso
- 40, 50 Garanzia
- 46 Centri servizio clienti

### Nederlands

- 16 Gebruiksaanwijzing
- 40, 50 Garantie
- 46 Servicecentra

### Dansk

- 18 Brugsanvisning
- 41, 50 Garanti
- 46 Serviceafdelinger

### Norsk

- 20 Bruksanvisning
- 41, 50 Garanti
- 46 Autoriserte verksteder

### Svenska

- 22 Bruksanvisning
- 41, 50 Konsumentköp EHL 91
- 46 Servicecenters

### Suomi

- 24 Käyttöohjeet
- 42, 50 Takuu
- 46 Asiakaspalvelu

### Polski

- 26 Instrukcja obsługi
- 42, 50 Warunki gwarancji
- 46 Serwis

### Ελληνικά

- 28 Οδηγίες χρήσεως
- 42, 50 Εγγύηση
- 46 Εργαστήριο επισκευών

### Русский

- 30 Инструкция по эксплуатации
- 43, 50 Гарантия
- 46 Сервисные центры

### Українська

- 33 Інструкція з експлуатації
- 44, 50 Гарантія
- 46 Сервісні центри

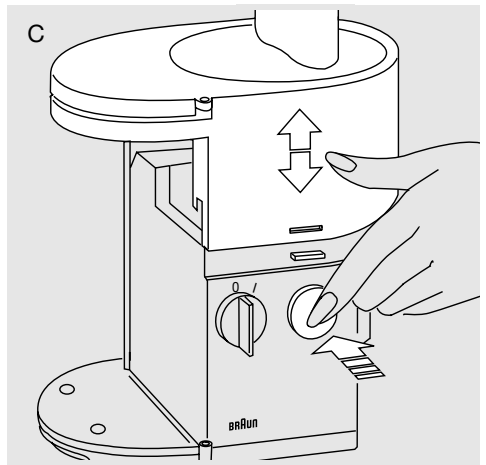
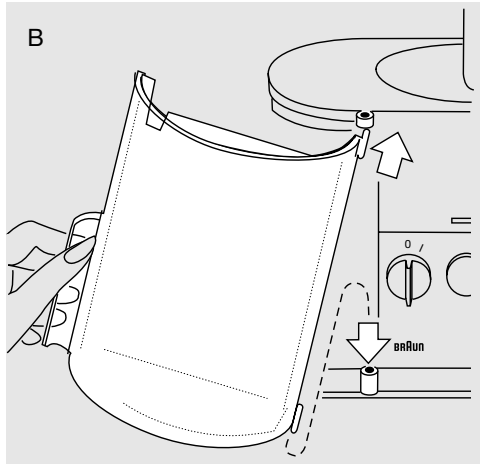
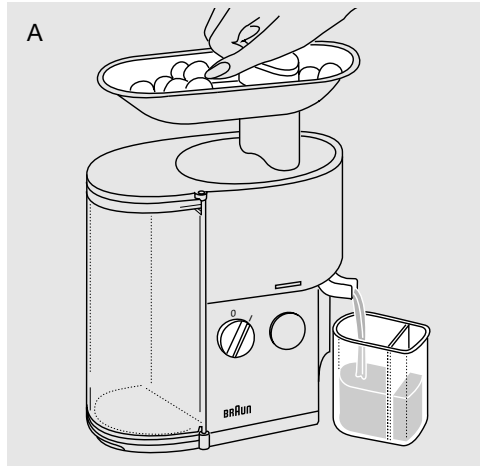
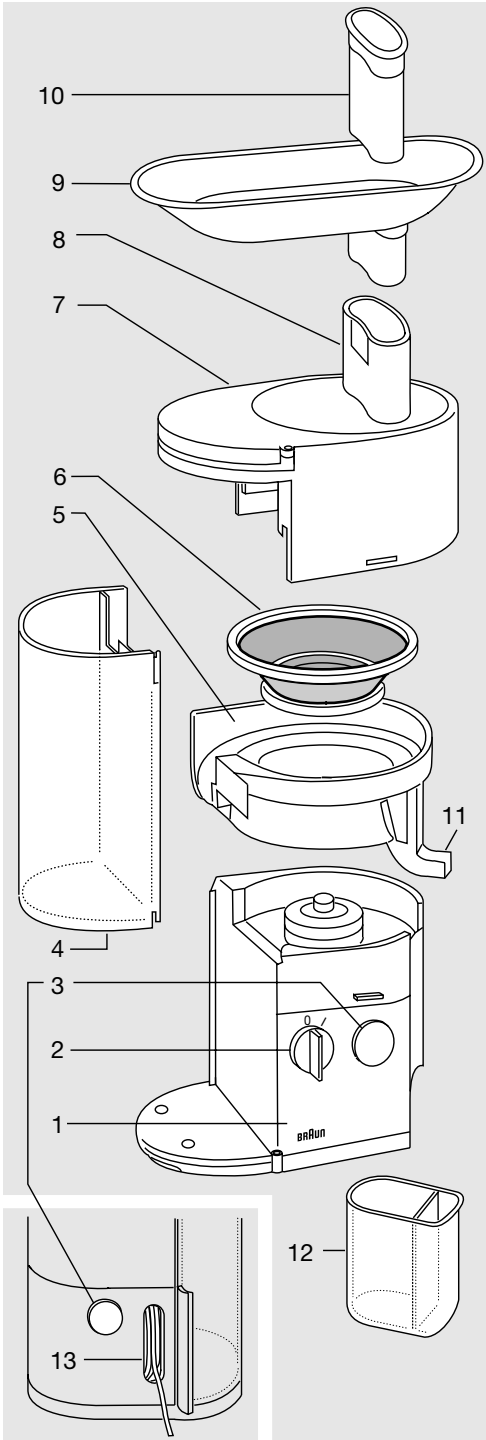
### عربي

- 37 طرق الاستعمال
- 45, 50 ضمان
- 46 مراكز الكفالات والصيانة



## Braun Infoline

- (D)** Haben Sie Fragen zu diesem Produkt?  
Rufen Sie an: (in Deutschland und  
Österreich zum Nulltarif)  
**00 800 27 28 64 63**  
**00 800 BRAUNINFOLINE**
- (CH)** **08 44 - 88 40 10**
- (E)** Servicio al consumidor para España:  
**9 01-11 61 84**
- (P)** Serviço ao Consumidor para Portugal:  
**080 820 00 33**
- (I)** Servizio consumatori:  
**(02) 6 67 86 23**
- (NL)** Heeft u vragen over dit produkt?  
Bel Braun Consumenten-infolijn:  
**(070) 4 13 16 58**
- (B)** Vous avez des questions sur ce produit ?  
Appelez Braun Belgique  
**(02) 711 92 11**
- (DK)** Har du spørgsmål om produktet? Så ring  
**70 15 00 13**
- (N)** Spørsmål om dette produktet? Ring  
**88 02 55 03**
- (S)** Frågor om apparaten? Ring Kundservice  
**020 - 21 33 21**
- (FIN)** Onko Sinulla kysyttävää tuotteesta? Soita  
**0203 77877**



## For UK only:

### WIRING

Your appliance is already fitted with a plug incorporating a 13 A fuse. If it does not fit your socket the plug should be cut off from the mains lead and an appropriate plug fitted. Throw away the cut off plug; do not insert it in a 13 A socket elsewhere in the house as this could cause a shock hazard.

#### IMPORTANT – Fitting a Different Plug:

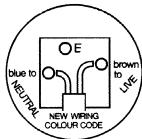
The wires in the mains lead are coloured in accordance with the following code:

Blue – Neutral                      Brown – Live

If the colours of the wires in the mains lead do not correspond with the coloured markings identifying the terminals in your plug, proceed as follows:

The blue wire must be connected to the terminal marked with the letter N or coloured black.

The brown wire must be connected to the terminal marked with the letter L or coloured red.



Never connect the blue or brown wire to the earth pin (E), when using a three pin plug. The appliance must be protected by a 13 amp fuse if a 13 A (BS 1363) plug is used.

The fuse cover must be refitted when changing the fuse. If the fuse cover is lost do not use the plug until a replacement cover is fitted. These parts are available from authorised Braun Service Dealers. Never use the plug without the fuse cover fitted.

### Caution

#### ● Read all instructions carefully before using this product.

- This product is suitable for normal household use only and not for commercial use.
- Keep out of children's reach.
- Do not reach into the filling shaft while the motor is running. Always use the pusher to guide food through the shaft.
- Remove plug from socket before assembling or disassembling appliance.
- Braun electric appliances meet applicable safety standards. Repairs on electric appliances must only be done by authorised service personnel. Faulty, unqualified repair work may cause accidents or injury to the user.

- The mains cable of this appliance can only be changed by an official Service dealer, since it requires a special tool.

### Specifications

- Voltage/wattage: See typeplate on the bottom of the appliance.
- Safety system: The appliance can only be switched on when the cover has been fully locked into position and can only be opened when the switch has been turned off.
- Motor stop: The motor will stop completely within 2 seconds of switching the appliance off.

### Safety fuse

If the appliance is overloaded the safety fuse will cut out. To restart the appliance:

- Turn the switch ② **off** = «0» (important!).
- Unlock and remove the cover ⑦.
- Clean the juice ring ⑤, filter ⑥ and cover ⑦.
- Allow the appliance to cool down approx. 20 minutes.
- Assemble the juicer again.
- Turn the switch ② **on** = «I».
- If the appliance still does not run, allow it to cool down again.

### Description

- ① Motor part
- ② On/off switch
- ③ Unlocking buttons
- ④ Pulp container
- ⑤ Juice ring
- ⑥ Filter
- ⑦ Cover
- ⑧ Filling shaft
- ⑨ Filling tray
- ⑩ Pusher
- ⑪ Juice spout
- ⑫ Juice container with foam separator
- ⑬ Cord storage

Before using for the first time, wash the juicer parts (see «Disassembling» and «Cleaning»).

### Assembling

1. Put the juice ring ⑤ on the motor part ① (fits loosely without engaging).
2. Lay the filter ⑥ into the juice ring ⑤.
3. Put the cover ⑦ on and push down firmly with both hands until you hear it snap into place.
4. Hang the pulp container ④ onto the hinges (the top one first); then close it and be sure it snaps into place.

- Put the juice container ② underneath the juice spout ① (A). Capacity: 500 ml. The juice container comes with a foam separator to ensure clear foam free juice.

If it is not required simply remove it from the juice container. You can, of course, place a glass or other container underneath the juice spout to collect the juice.

- For easier filling, put the filling tray ⑨ on top of the filling shaft ⑧ (A).

### Preparing fruit or vegetables

**Important:** Use only well ripened fruits, otherwise the filter ⑥ may be clogged up which would result in repeated cleaning of the filter. Wash or peel the fruit or vegetables you want to process. Fruit with large pips or stones should always have these removed first. Process seed fruit (such as apples, pears) with peels and cores. Fruit and vegetables with thick peels (e. g. citrus fruits, melons, kiwis, beets) must be peeled first. For grapes, cut off the main stem. For leaf vegetables (e. g. cabbage and spinach) and herbs, roll up leaves together tightly. Cut fruit and vegetables into pieces large enough to fit into the filling shaft.

Currants and rhubarb are not suitable for making juice in the Braun Multipress.

### Extracting juice

- Put fruit or vegetables into the filling shaft ⑧. Turn the switch ② on = «|» and press lightly with the pusher ⑩ (A). Add further fruits or vegetables while the motor is running.
- The amount of juice you extract depends on the nature of the fruits and vegetables. When processing berries the quantity of juice will be smaller, because of their high amount of pectin (pectin is a natural gelatine). (Special berry presses or steam presses are better suited to that type of fruit.)
- Fruit and vegetable juices contain valuable vitamins and minerals, which quickly deteriorate when they come into contact with oxygen or light. Drink juice fresh – right after it has been extracted.

### Emptying the pulp container ④ and filter ⑥

You can extract juice continuously until the pulp container is full:

- When processing produce with high liquid content (e. g. tomatoes, grapes, melons): Do not process more than 3 kg of fruit or vegetables before emptying the pulp container.

- When processing drier produce (e. g. carrots, pears, apples): Empty the pulp container as soon as it looks full.

If the juice suddenly becomes much thicker or if you can hear the motor speed slow down, the filter must be emptied (see «Disassembling»).

Empty the pulp and put the appliance together again.

### Disassembling

- Turn the switch ② off = «0».
- Remove the pusher ⑩. Remove the filling tray ⑨. Swing open the pulp container ④, push it up and pull off downward diagonally (B). (When replacing the pulp container, insert the top first.)
- Press the unlocking buttons ③ on both sides of the juicer (C), to unlock the cover ⑦. Remove the cover.
- Remove the juice ring ⑤ together with the filter ⑥. Take the filter out of the juice ring.

### Cleaning

- Always remove the plug from the socket first!
- Clean the motor part ① with a damp cloth only – never immerse it in water. All other plastic parts can be washed in a dishwasher or using warm water and normal dishwashing liquids. The plastic parts may discolour when processing food with a high pigment content (e. g. carrots): Use vegetable oil to clean before using the dishwasher.

**Important:** The filter is not dishwasherproof, but can easily be cleaned with a small brush. Do not use a damaged filter. We recommend to replace the filter after 5 years (available at Braun Service Centres).

For space-saving storage, place the filling tray ⑨ upside down on top of the juicer.

Subject to change without notice.

This product conforms to the EMC-Requirements as laid down by the Council Directive 89/336/EEC and to the Low Voltage Regulation (73/23 EEC).



## Deutsch

### Garantie

Als Hersteller übernehmen wir für dieses Gerät – nach Wahl des Käufers zusätzlich zu den gesetzlichen Gewährleistungsansprüchen gegen den Verkäufer – eine Garantie von 1 Jahr ab Kaufdatum.

Innerhalb dieser Garantiezeit beseitigen wir nach unserer Wahl durch Reparatur oder Austausch des Gerätes unentgeltlich alle Mängel, die auf Material- oder Herstellungsfehlern beruhen.

Von der Garantie sind ausgenommen: Schäden, die auf unsachgemäßen Gebrauch (Betrieb mit falscher Stromart/Spannung, Anschlüsse an ungeeignete Stromquelle, Bruch) zurückzuführen sind, normaler Verschleiß und Mängel, die den Wert oder die Gebrauchstauglichkeit des Gerätes nur unerheblich beeinflussen.

Bei Eingriffen nicht von uns autorisierter Stellen oder bei Verwendung anderer als original Braun Ersatzteile erlischt die Garantie.

Die Garantie tritt nur in Kraft, wenn das Kaufdatum durch Stempel und Unterschrift des Händlers auf der Garantiekarte und der Registrierkarte bestätigt ist. Sie kann in allen Ländern in Anspruch genommen werden, in denen dieses Gerät von Braun oder von uns autorisierten Händlern verkauft wird.

Im Garantiefall senden Sie bitte das vollständige Gerät mit der ausgefüllten Garantiekarte einem unserer autorisierten Servicehändler oder an eine Braun Kundendienststelle. Die Anschriften für Deutschland können Sie zum Nulltarif unter der Rufnummer 00 800 / 27 28 64 63 erfragen.

Wir stehen Ihnen hier mit unserer Braun Infoline auch für weitere Fragen zu unseren Produkten gern zur Verfügung.

## English

### Guarantee

We grant a 1 year guarantee on the product commencing on the date of purchase.

Within the guarantee period we will eliminate, free of charge, any defects in the appliance resulting from faults in material or workmanship either by repairing, or exchanging parts or exchanging the whole appliance as we may choose.

Not covered by this guarantee: damage arising from improper use (operation with incorrect current/voltage, plugging it into an unsuitable power point, breakage), normal wear and defects which have a negligible effect on the value or operation of the appliance.

The guarantee becomes void if repairs are undertaken by unauthorized persons and if original Braun parts are not used.

The guarantee only comes into force if the date of purchase is confirmed by the dealer's stamp and signature on the guarantee card and registration card.

This guarantee extends to every country where this appliance is supplied by Braun or its appointed distributor and where no import restrictions or other legal regulations hinder or prevent service being given under guarantee.

Service under the guarantee does not affect the expiry date of the guarantee. The guarantee on parts or entire appliances which are exchanged ends when the guarantee on this appliance expires.

In the event of a claim under this guarantee, hand in the complete appliance with the valid guarantee card to your dealer, or send both to the nearest Braun Customer Service Centre. All other claims including for damages resulting from this guarantee are excluded unless our liability is legally mandatory.

Those claims arising out of the sales contract with the vendor are not affected by this guarantee.

### For UK only:

This guarantee in no way affects your rights under statutory law.