

BRAUN

LS 5500



Silk & Soft BodyShave

www.braun.com/register

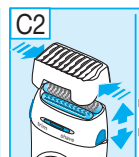
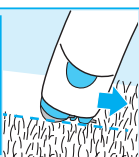
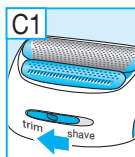
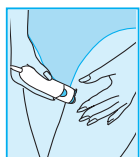
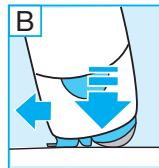
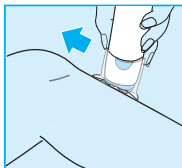
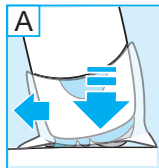
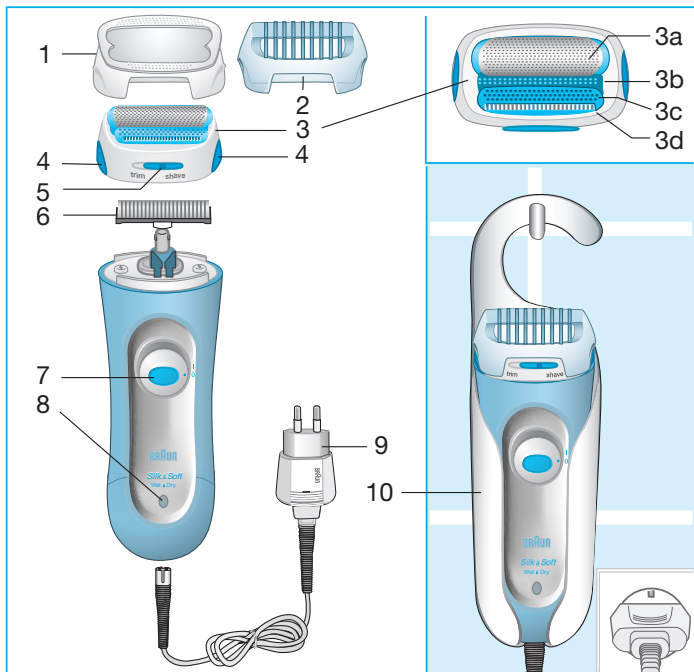
Type 5328

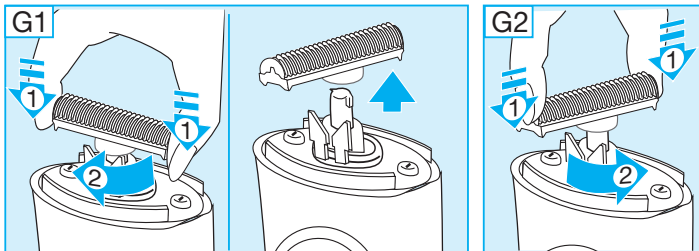
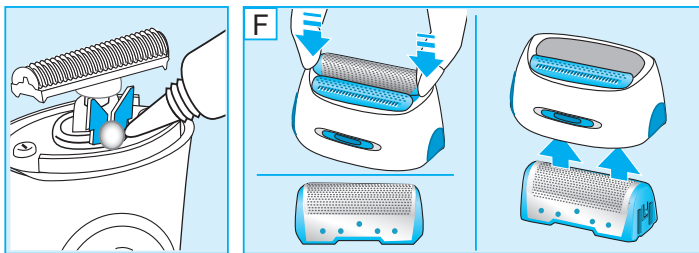
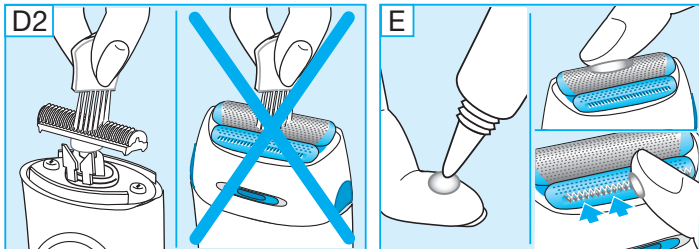
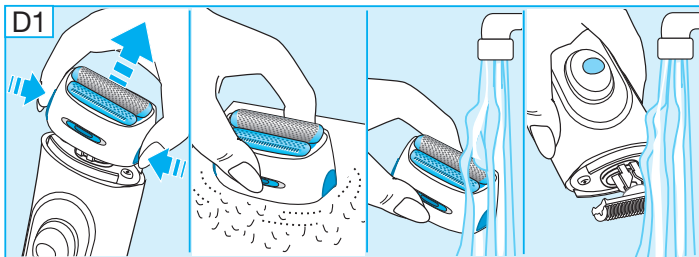
Deutsch	6, 72, 83
English	9, 72, 83
Français	12, 72, 83
Español	15, 73, 83
Português	18, 73, 83
Italiano	21, 74, 83
Nederlands	24, 74, 83
Dansk	27, 75, 83
Norsk	30, 75, 83
Svenska	33, 75, 83
Suomi	36, 76, 83
Polski	39, 76, 83
Český	42, 77, 83
Slovenský	45, 77, 83
Magyar	48, 78, 83
Slovenski	51, 78, 83
Hrvatski	54, 79, 83
Ελληνικά	57, 79, 83
Русский	61, 80, 83
Українська	65, 81, 83



Braun Infoline

- D** Haben Sie Fragen zu diesem Produkt?
- A** Rufen Sie an (gebührenfrei):
00 800 27 28 64 63
00 800 BRAUNINFOLINE
- CH** **08 44 - 88 40 10**
- GB** **Helpline**
Should you require any further assistance please call Braun (UK) Consumer Relations on **0800 783 70 10**
- IRL** **Helpline**
1 800 509 448
- E** Servicio al consumidor para España:
901 11 61 84
- P** Serviço ao Consumidor para Portugal:
808 20 00 33
- I** Servizio consumatori:
(02) 6 67 86 23
- NL** Heeft u vragen over dit produkt? Bel Braun Consumenten-infolijn:
(070) 4 13 16 58
- B** Vous avez des questions sur ce produit ?
Appelez Braun Belgique
(02) 711 92 11
- DK** Har du spørgsmål om produktet? Så ring
70 15 00 13
- N** Spørsmål om dette produktet? Ring
22 63 00 93
- S** Frågor om apparaten? Ring Kundservice
020 - 21 33 21
- FIN** Onko Sinulla kysyttävää tuotteesta? Soita
0203 77877
- RUS** Если у Вас есть вопросы по поводу данного продукта, звоните
(095) 258 62 70





English

Our products are designed to meet the highest standards of quality, functionality and design.

The Braun Silk&Soft BodyShave has been developed for a perfect and comfortable shave, offering you the perfect choice for legs, underarms and the bikini area. We hope you entirely enjoy your new Braun Lady shaver.

Warning

This appliance is provided with a special cord set with an integrated Safety Extra Low Voltage power supply. Do not exchange or manipulate any part of it. Otherwise there is risk of electric shock.

Description

- ① OptiShave attachment
- ② OptiTrim attachment
- ③ Shaver head
- ③a Shaver foil
- ③b SoftStrip
- ③c EasyGlide cushion
- ③d Long hair trimmer
- ④ Release buttons
- ⑤ TrimLock «trim/shave»
- ⑥ Cutter block
- ⑦ On/off switch
- ⑧ Charging light
- ⑨ Special cord set
- ⑩ Charging holder

Charging

The best environmental temperature for charging is between 15 °C and 35 °C.

- Using the special cord set, connect the shaver to an electrical outlet with the motor switched off.
- When charging for the first time, leave the shaver to charge continuously for 4 hours. Subsequent charges will only take about 1 hour.

- The charging light ⑧ shows that the shaver is being charged. When the battery is fully charged, the charging light intermittently blinks on and off. This indicates that the battery is at full capacity.
- A full charge provides up to 40 minutes cordless operation depending on your hair type and usage behaviour.
- Once the shaver is completely charged, discharge it through normal use. Then recharge to full capacity. Maximum battery capacity will only be reached after several charging/discharging cycles.
- Thanks to the convenient 2-way feature your Braun Silk&Soft may also be used even if the rechargeable batteries are discharged, connecting it to an electrical outlet via the special cord set.
- The special cord set automatically adapts to any worldwide AC voltage (from 100 to 240 V).

Shaving

For silky smooth skin, the Silk&Soft system captures even problem hairs, the integrated SoftStrip stretches the skin to ensure a closer reach and the floating shaver foil and the floating longhair trimmer hug the skin, all to ensure a perfectly close shave.

For a gentle shave, the EasyGlide cushion ensures smoother gliding and reduces skin irritation.

The additional OptiShave attachment allows an extra close and comfortable shave of legs.

- Press and slide up the on/off switch ⑦ to turn the shaver on. Make sure that the TrimLock is in the «shave» position.
- For optimum shaving results, place the OptiShave attachment onto the shaver head (A). It ensures perfect closeness

and the optimum usage angle so that both, the shaver foil and the long hair trimmer are in contact with the skin.

- Move the appliance slowly against the direction of hair growth. Adjusting to the body contours, the long hair trimmer first raises all long hairs and cuts them off. Then the shaver foil follows to smooth away any stubble.
- If you have not shaved for a long period of time, remove the OptiShave attachment to allow a faster pre-cutting of longer hairs (B).
- Also, for the more difficult-to-reach underarm area remove the OptiShave attachment for perfect reach.
- Always ensure that both, the shaver foil and the long hair trimmer are in contact with the skin.

Trimming & Styling

For precise lines and contours like the bikini line, lock the long hair trimmer (30) by sliding the TrimLock (5) to the position «trim» (C1).

To trim hair to a uniform length (about 4 mm), e.g. in the bikini area, lock the long hair trimmer (30), place the OptiTrim attachment (2) onto the shaver head (C2).

Wet & Dry usage

Your Braun Silk&Soft may also be used in the shower. Before doing so, make sure that it is unplugged. When using it in the shower, we recommend applying shaving foam or gel.

When you are finished

After shaving, you may want to smooth on a little body cream or lotion. However, avoid using irritating substances like deodorants with alcohol right away.

Cleaning

Always unplug the appliance before cleaning.

Regular cleaning ensures better shaving performance. After each shave, proceed as follows (D1):

- Press the release buttons (4) to remove the shaver head.
- Rinse the shaver head and the cutter block separately under warm running water. A natural based soap may also be used provided it contains no particles or abrasive substances. Rinse off all foam.
- Leave the cutter block and shaver head to dry separately.

Alternatively, you may clean the shaver using the brush provided (D2):

- Press the release buttons (4) to remove the shaver head. Tap the bottom of the shaver head gently on a flat surface (not on the foil).
- Brush out the cutter block and the inside of the shaver head. However, do not clean the shaver foil with the brush as this may damage the foil.

Your Braun Silk&Soft comes with a practical charging holder (10) which is also very useful for leaving the shaving parts to dry.

When you insert the appliance with the switch facing the holder and the OptiTrim attachment placed on the head, it snaps into the holder for convenient transport.

Keeping your Braun Silk&Soft BodyShave in top shape

- The shaving parts need to be lubricated regularly every 3 months (E). If you clean the shaver head under running water, lubricate it after each cleaning. Apply some light machine oil or vase-

line to the shaver foil and the metal parts of the long hair trimmer. Then remove the shaver head and also apply a tiny amount of vaseline as shown in picture section (E).

- The shaver foil and the cutter block are precision parts that wear out with time. To maintain optimum shaving performance, replace your foil and cutter block when you notice a reduced shaving performance.
- Do not shave with a damaged foil or cord.
- How to replace the shaving parts
Shaver foil: Press the release buttons ④ to remove the shaver head. To remove the shaver foil, press the blue plastic frame (F). To mount a new one, insert it from inside the shaver head.
Cutter block: To remove the cutter block, press and turn it 90° (G1), then take it off. To put on a new cutter block, press it onto the cutter block holder and turn 90° (G2).

Preserving the rechargeable batteries

In order to maintain the optimum capacity of the rechargeable batteries, the shaver has to be fully discharged (by shaving) approximately every 6 months. Then recharge the shaver to full capacity. Do not expose the shaver to temperatures higher than 50 °C for extended periods of time.

Environmental notice

This appliance is provided with nickel-hydride rechargeable batteries. To protect the environment, do not dispose of this appliance in the household waste at the end of its useful life. Disposal can take place at a Braun Service Centre or appropriate collection sites.

However, if you prefer to dispose of the appliance yourself, refer to the section «Battery removal».

Subject to change without notice.

This product conforms to the EMC-Directive 89/336/EEC and to the Low Voltage Regulation (73/23 EEC).



Electric specifications see printing on the special cord set.