

# BRAUN

## 3710



# InterFace<sup>Excel</sup>

Type 5449

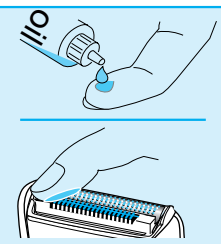
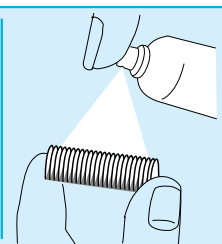
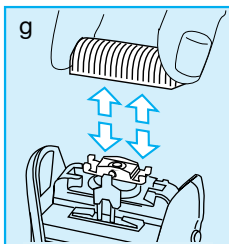
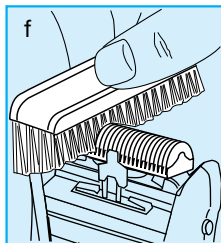
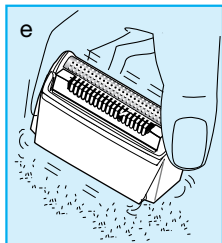
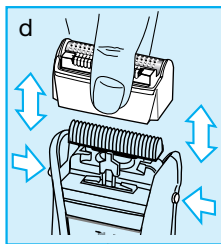
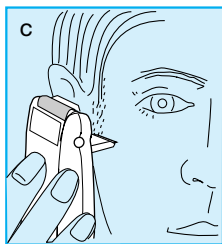
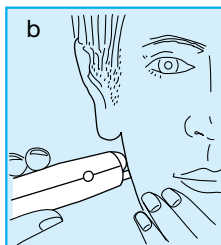
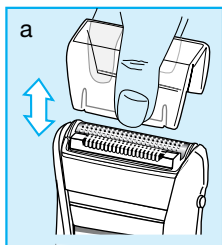
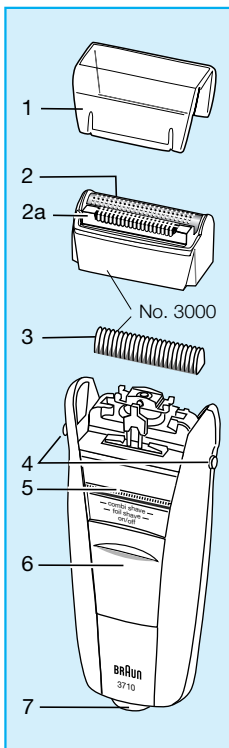


## Braun Infoline

Deutsch	4, 30, 37
English	6, 30, 37
Français	8, 31, 37
Español	10, 31, 37
Português	12, 32, 37
Italiano	14, 33, 37
Nederlands	16, 33, 37
Dansk	18, 34, 37
Norsk	20, 34, 37
Svenska	22, 35, 37
Suomi	24, 35, 37
Türkçe	26, 37
Ελληνικά	28, 36, 37

**Internet:**  
[www.braun.com](http://www.braun.com)

- (GB)** **Helpline**  
Should you require any further assistance please call Braun (UK) Consumer Relations on **0800 783 70 10**
- (IRL)** **Helpline**  
**1 800 509 448**
- (D)** Haben Sie Fragen zu diesem Produkt?
- (A)** Rufen Sie an (gebührenfrei):  
**00 800 27 28 64 63**  
**00 800 BRAUNINFOLINE**
- (CH)** **08 44 - 88 40 10**
- (E)** Servicio al consumidor para España:  
**901 11 61 84**
- (P)** Serviço ao Consumidor para Portugal:  
**808 20 00 33**
- (I)** Servizio consumatori:  
**(02) 6 67 86 23**
- (NL)** Heeft u vragen over dit produkt?  
Bel Braun Consumenten-infolijn:  
**0 800-445 53 88**
- (B)** Vous avez des questions sur ce produit ?  
Appelez Braun Belgique  
**(02) 711 92 11**
- (DK)** Har du spørgsmål om produktet? Så ring  
**70 15 00 13**
- (N)** Spørsmål om dette produktet? Ring  
**22 63 00 93**
- (S)** Frågor om apparaten? Ring Kundservice  
**020 - 21 33 21**
- (FIN)** Onko Sinulla kysyttävää tuotteesta? Soita  
**0203 77877**
- (TR)** Müşteri Hizmetleri Merkezi:  
**0212 - 473 75 85**



## English

Our products are designed to meet the highest standards of quality, functionality and design. We hope you enjoy your new Braun shaver.

### Warning

- Keep the appliance dry.
- For safety reasons, periodically check the cord for damage and replace it, if it is loose in the shaver socket.

## 1 Description

1	Foil protection cap	4	Release button
2	Shaver foil	5	Pop-out long hair trimmer
2a	InterFace trimmer	6	Switch
3	Cutter block	7	Shaver socket

### Specifications

- Wattage: 3 Watts
- Voltage range: 100–240 V ~ / 50 or 60 Hz  
(automatic adaptation of voltage and frequency)

## 2 Shaving

### Switch positions

off

foil shave = Shaver foil only.

combi shave = Combination shave (InterFace trimmer works in tandem with the shaver foil to first cut the longer problem hairs, which then allows the foil to shave the shorter hairs even closer) (b).

trimmer = The long hair trimmer is activated (for trimming sideburns, moustache and beard) (c).

### Tips for the perfect shave

- We recommend that you shave before washing, as the skin tends to be slightly swollen after washing.
- Hold the shaver at right angles (90°) to the skin.
- Stretch your skin and shave against the direction of beard growth.
- To maintain 100% shaving performance, replace your foil and cutter block at least every 18 months or when worn.

## 3 Keeping your shaver in top shape

### 3.1 Cleaning

- After shaving, switch the shaver off. Press the release buttons, take off the shaver foil (d) and gently tap it out on a flat surface (e).
- Then thoroughly clean the cutter block with the brush (f). About every four weeks, clean the cutter block with Braun cleaning agents (g).
- Do not clean the shaver foil with the brush.
- If you have a very dry skin and you notice a reduced operation time of the shaver, you should put a drop of light machine oil onto the InterFace trimmer and shaver foil (g).

### 3.2 Replacing the shaving parts

- To maintain 100% shaving performance, replace your foil and cutter block at least every 18 months or when worn. Change both parts at the same time for a closer shave with less skin irritation.  
(Shaver foil and cutter block: part no. 3000)
- Press the release buttons, take off the shaver foil. Replace the new shaver foil in the right direction until it locks in place.
- To remove the cutter block, lift it off (g).
- To replace the cutter block, snap onto the holding studs.

Subject to change without notice.

This product conforms to the European Directives EMC 89/336/EEC and Low Voltage 73/23/EEC.



Please do not dispose of the product in the household waste at the end of its useful life. Disposal can take place at a Braun Service Centre or at appropriate collection points provided in your country.



# Deutsch

## Garantie

Als Hersteller übernehmen wir für dieses Gerät – nach Wahl des Käufers zusätzlich zu den gesetzlichen Gewährleistungsansprüchen gegen den Verkäufer – eine Garantie von 2 Jahren ab Kaufdatum. Innerhalb dieser Garantiezeit beseitigen wir nach unserer Wahl durch Reparatur oder Austausch des Gerätes unentgeltlich alle Mängel, die auf Material- oder Herstellungsfehlern beruhen. Die Garantie kann in allen Ländern in Anspruch genommen werden, in denen dieses Braun Gerät von uns autorisiert verkauft wird.

Von der Garantie sind ausgenommen: Schäden durch unsachgemäßen Gebrauch (Knickstellen an der Scherfolie, Bruch), normaler Verschleiß (z.B. Scherfolie oder Klingenblock) sowie Mängel, die den Wert oder die Gebrauchstauglichkeit des Gerätes nur unerheblich beeinflussen. Bei Eingriffen durch nicht von uns autorisierte Braun Kundendienstpartner sowie bei Verwendung anderer als Original Braun Ersatzteile erlischt die Garantie.

Im Garantiefall senden Sie das Gerät mit Kaufbeleg bitte an einen autorisierten Braun Kundendienstpartner. Die Anschrift für Deutschland können Sie kostenlos unter 00800/27 28 64 63 erfragen.

# English

## Guarantee

We grant 2 years guarantee on the product commencing on the date of purchase. Within the guarantee period we will eliminate, free of charge, any defects in the appliance resulting from faults in materials or workmanship, either by repairing or replacing the complete appliance as we may choose.

This guarantee extends to every country where this appliance is supplied by Braun or its appointed distributor.

This guarantee does not cover: damage due to improper use, normal wear and tear (e.g. shaver foil or cutter block) as well as defects that have a negligible effect on the value or operation of the appliance. The guarantee becomes void if repairs are undertaken by unauthorised persons and if original Braun parts are not used.

To obtain service within the guarantee period, hand in or send the complete appliance with your sales receipt to an authorised Braun Customer Service Centre.

## For UK only:

This guarantee in no way affects your rights under statutory law.