

BRAUN

7790 

7785 

+



7765



Synchro Pro

Type 5492
Type 5493

www.braun.com/register

Deutsch	4, 57, 61
English	8, 57, 61
Français	12, 57, 61
Español	16, 57, 61
Português	20, 58, 61
Italiano	24, 58, 61
Nederlands	28, 59, 61
Dansk	32, 59, 61
Norsk	36, 59, 61
Svenska	40, 59, 73
Suomi	44, 60, 61
Türkçe	48, 61
Ελληνικά	52, 60, 61

Internet:

www.braun.com

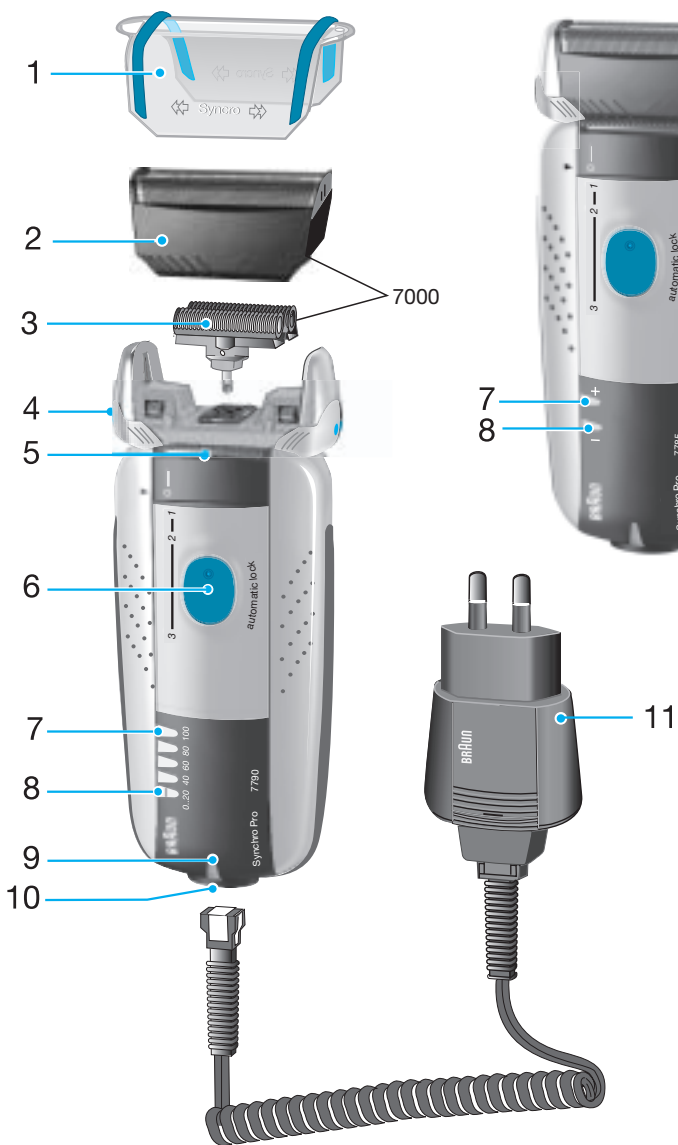


Braun Infoline

- (D)** Haben Sie Fragen zu diesem Produkt?
(A) Rufen Sie an (gebührenfrei):
00 800 27 28 64 63
00 800 BRAUNINFOLINE
- (CH)** **08 44 - 88 40 10**
- (E)** Servicio al consumidor para España:
901 11 61 84
- (P)** Serviço ao Consumidor para Portugal:
808 20 00 33
- (I)** Servizio consumatori:
(02) 6 67 86 23
- (NL)** Heeft u vragen over dit product?
Bel Braun Consumenten-infolijn:
0 800-445 53 88
- (B)** Vous avez des questions sur ce produit ?
Appelez Braun Belgique
(02) 711 92 11
- (DK)** Har du spørgsmål om produktet? Så ring
70 15 00 13
- (N)** Spørsmål om dette produktet? Ring
22 63 00 93
- (S)** Frågor om apparaten? Ring Kundservice
020 - 21 33 21
- (FIN)** Onko Sinulla kysyttävää tuotteesta? Soita
0203 77877
- (TR)** Müşteri Hizmetleri Merkezi:
0212 - 473 75 85

Syncro Pro 7790

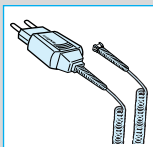
Syncro Pro 7785 Syncro Pro 7765



Our products are designed to meet the highest standards of quality, functionality and design. We hope you enjoy your new Braun shaver. Braun Syncro 7790 and 7785 are supplied with a Braun Clean&Renew™ (please see separate use instructions).

SmartLogic

The « SmartLogic » electronics inside your shaver analyzes your personal shaving patterns, and then adapts the battery care to ensure optimal performance.



Warning

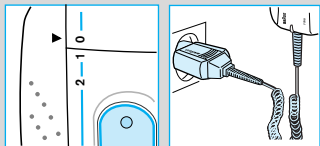
Keep the appliance dry.

Your shaver is provided with a special cord set with an integrated Safety Extra Low Voltage power supply. Do not exchange or manipulate any part of it. Otherwise there is risk of electric shock.

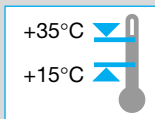
Description

- | | |
|-----------------------|---------------------------|
| 1 Foil protection cap | 7 Charging lights (green) |
| 2 Shaver foil | 8 Low-charge light (red) |
| 3 Cutter block | 9 Pilot light |
| 4 Foil release button | 10 Shaver socket |
| 5 Long hair trimmer | 11 Special cord set |
| 6 Switch | |

Charging the shaver



- **First charging:** Using the special cord set, connect the shaver to an electrical outlet with the switch on position «0» and charge it for at least 4 hours (plug might get warm). The SmartLogic inside your shaver automatically monitors the condition of the batteries as well as the charging/discharging processes and adapts them to your personal shaving patterns.
- From now on, the SmartLogic inside your shaver will ensure optimal care of the battery. If, for instance, it is your habit to never let the batteries get low, the SmartLogic will recognize this, look for a pause when you are likely to not use the shaver and completely discharge and then recharge your shaver to recondition the batteries (every six months at the most, and only when necessary).
- A full charge will give up to 50 minutes of cordless shaving time depending on your beard growth. However, the maximum battery capacity will only be reached after several charging/discharging cycles.
- Best environmental temperature range for charging is 15°C to 35°C.



- Do not expose the shaver to temperatures of more than 50 °C for longer periods of time.

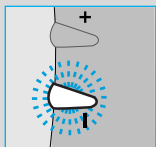
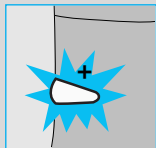
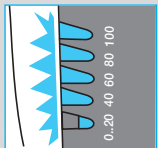
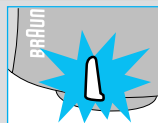
Indicator lights

The pilot light shows that the shaver is connected to the mains.

7790: When the rechargeable battery is fully charged, all five charging lights illuminate (20% per light), provided the shaver is connected to the mains or switched on.

7785/7765: The green charging light shows that the shaver is being charged. When the rechargeable battery is fully charged, the charging light flashes or goes off. If later on, the charging light comes on again, this indicates that the shaver is being recharged to maintain its full capacity.

7790/7785/7765: The red low-charge light flashes when the battery capacity has dropped below 20%, provided the shaver is switched on. The remaining capacity will then be sufficient for 2 to 3 shaves.



Shaving

Switch positions

0 = Off (switch is locked)

Press and push up the switch to operate the shaver:

1 = Shaving with the pivoting head

The pivoting cutting system automatically adjusts to every contour of your face

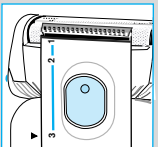
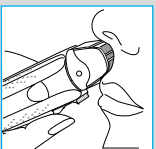
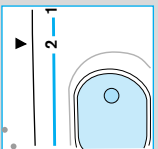
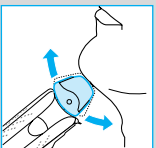
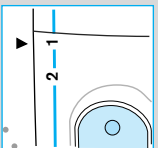
2 = Shaving with the pivoting head locked at an angle (to permit shaving in difficult areas, e.g. under the nose)

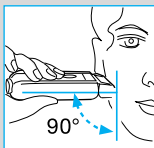
3 = The long hair trimmer is activated (for trimming sideburns, moustache and beard).

Shaving with the cord

If the rechargeable batteries are discharged, you may also shave with the shaver connected to an electrical outlets via the special cord set.

(If the shaver does not run immediately, charge it with the switch on position «0» for approx. 1 minute.)





Tips for the perfect shave

- We recommend that you shave before washing, as the skin tends to be slightly swollen after washing.
- Hold the shaver at right angles (90°) to the skin.
- Stretch your skin and shave against the direction of beard growth.
- To maintain 100% shaving performance, replace your foil and cutter block at least every 18 months or when worn.

Keeping your shaver in top shape



Automated cleaning

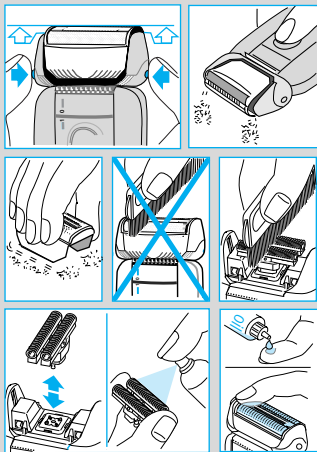
The Braun Clean&Renew™ (with 7790 and 7785 models only) automatically takes care of all cleaning and lubrication needs of your shaver. Please refer to separate use instructions.

Manual cleaning

For easy cleaning after each shave, switch the shaver off. Press the release buttons to lift the shaver foil (do not remove the foil completely). Switch on the shaver for approx. 5-10 seconds so that the shaved stubbles can fall out.

For a thorough cleaning (weekly), remove the shaver foil and tap it out on a flat surface. Using the brush, clean the cutter block and the inner area of the pivoting head. About every four weeks, clean the cutter block with Braun cleaning agents.

If your skin is very dry and you notice a reduced operation time of the shaver, apply a drop of light machine oil onto the shaver foil.



Replacing the shaving parts

To maintain 100% shaving performance, replace your foil and cutter block at least every 18 months or when worn. Change both parts at the same time for a closer shave with less skin irritation.

(Shaver foil and cutter block: 7000 series)



7000

Environmental notice

This appliance is provided with nickel-hydride rechargeable batteries. To protect the environment, do not dispose of the appliance in the household waste at the end of its useful life. Open the housing as shown, remove and dispose of the batteries at your retail store or at appropriate collection sites according to national or local regulations.

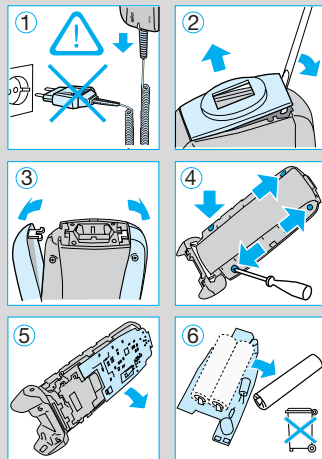
Subject to change without notice.

This product conforms to the EMC-Directive 89/336/EEC and to the Low Voltage Regulation (73/23 EEC).



Electric specifications see printing on the special cord set.

At the end of the product's useful life, please dispose of it at appropriate collection points provided in your country.



Deutsch

Garantie

Als Hersteller übernehmen wir für dieses Gerät – nach Wahl des Käufers zusätzlich zu den gesetzlichen Gewährleistungsansprüchen gegen den Verkäufer – eine Garantie von 2 Jahren ab Kaufdatum. Innerhalb dieser Garantiezeit beseitigen wir nach unserer Wahl durch Reparatur oder Austausch des Gerätes unentgeltlich alle Mängel, die auf Material- oder Herstellungsfehlern beruhen. Die Garantie kann in allen Ländern in Anspruch genommen werden, in denen dieses Braun Gerät von uns autorisiert verkauft wird.

Von der Garantie sind ausgenommen: Schäden durch unsachgemäßen Gebrauch (Knickstellen an der Scherfolie, Bruch), normaler Verschleiß (z.B. Scherfolie oder Klingenblock) sowie Mängel, die den Wert oder die Gebrauchstauglichkeit des Gerätes nur unerheblich beeinflussen. Bei Eingriffen durch nicht von uns autorisierte Braun Kundendienstpartner sowie bei Verwendung anderer als Original Braun Ersatzteile erlischt die Garantie.

Im Garantiefall senden Sie das Gerät mit Kaufbeleg bitte an einen autorisierten Braun Kundendienstpartner. Die Anschrift für Deutschland können Sie kostenlos unter 00800/27 28 64 63 erfragen.

English

Guarantee

We grant 2 years guarantee on the product commencing on the date of purchase. Within the guarantee period we will eliminate, free of charge, any defects in the appliance resulting from faults in materials or workmanship, either by repairing or replacing the complete appliance as we may choose.

This guarantee extends to every country where this appliance is supplied by Braun or its appointed distributor.

This guarantee does not cover: damage due to improper use, normal wear and tear (e.g. shaver foil or cutter block) as well as defects that have a negligible effect on the value or operation of the appliance. The guarantee becomes void if repairs are undertaken by unauthorised persons and if original Braun parts are not used.

To obtain service within the guarantee period, hand in or send the complete appliance with your sales receipt to an authorised Braun Customer Service Centre.

For UK only:

This guarantee in no way affects your rights under statutory law.

Français

Garantie

Nous accordons une garantie de 2 ans sur ce produit, à partir de la date d'achat.

Pendant la durée de la garantie, Braun prendra gratuitement à sa charge la réparation des vices de fabrication ou de matière en se réservant le droit de décider si certaines pièces doivent être réparées ou si l'appareil lui-même doit être échangé.

Cette garantie s'étend à tous les pays où cet appareil est commercialisé par Braun ou son distributeur exclusif.

Cette garantie ne couvre pas: les dommages occasionnés par une utilisation inadéquate, l'usure normale (par exemple, grille et bloc-couteaux) ainsi que les défauts d'usures qui ont un effet négligeable sur la valeur ou l'utilisation de l'appareil. Cette garantie devient caduque si des réparations ont été effectuées par des personnes non agréées par Braun et si des pièces de rechange ne provenant pas de Braun ont été utilisées.

Pour toute réclamation intervenant pendant la période de garantie, retournez ou rapportez l'appareil ainsi que l'attestation de garantie à votre revendeur ou à un Centre Service Agréé Braun.

Appelez au 01.47.48.70.00 pour connaître le Centre Service Agréé Braun le plus proche de chez vous.

Clause spéciale pour la France

Outre la garantie contractuelle exposée ci-dessus, nos clients bénéficient de la garantie légale des vices cachés prévue aux articles 1641 et suivants du Code civil.

Español

Garantía

Braun concede a este producto 2 años de garantía a partir de la fecha de compra.

Dentro del periodo de garantía, subsanaremos, sin cargo alguno, cualquier defecto del aparato