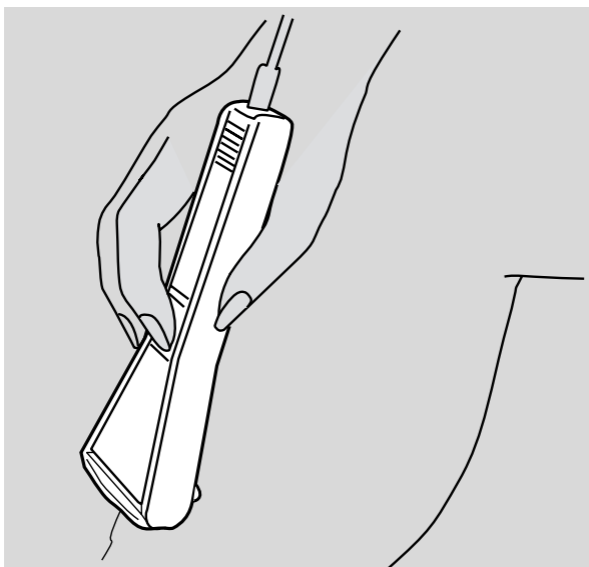


BRAUN



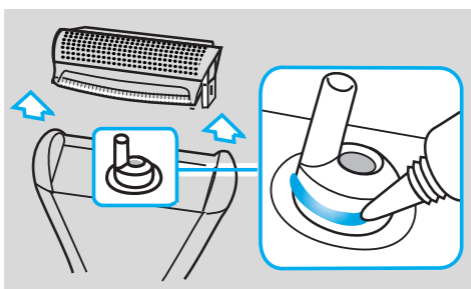
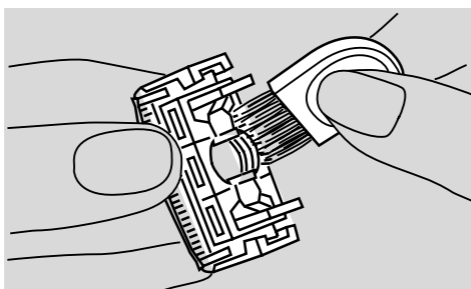
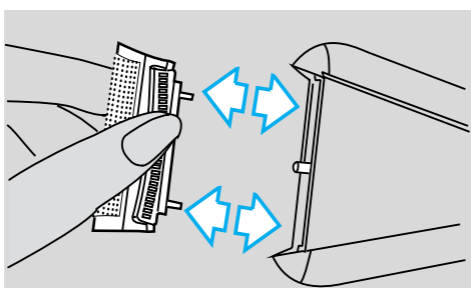
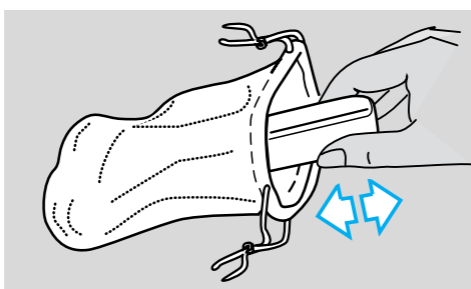
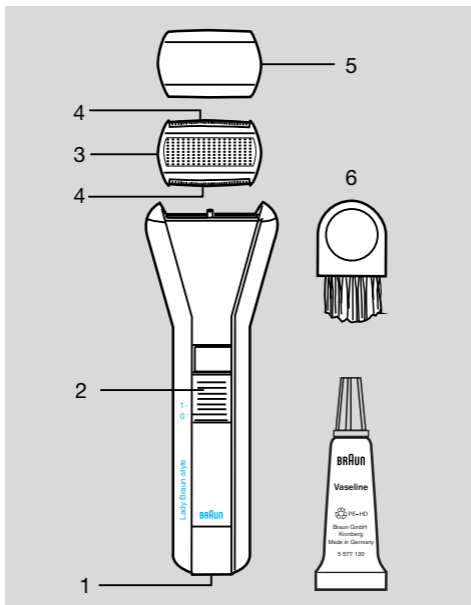
Type 5577

Lady Braun style



Braun Infoline

- (D)** Haben Sie Fragen zu diesem Produkt?
Rufen Sie an: (gebührenfrei)
- (A)** **00 800 27 28 64 63**
00 800 BRAUNINFOLINE
- (CH)** **08 44 - 88 40 10**
- (E)** Servicio al consumidor para España:
901-11 61 84
- (I)** Servizio consumatori:
(02) 6 67 86 23
- (NL)** Heeft u vragen over dit produkt?
Bel Braun Consumenten-infolijn:
(070) 4 13 16 58
- (B)** Vous avez des questions sur ce produit ?
Appelez Braun Belgique
(02) 711 92 11
- (DK)** Har du spørgsmål om produktet? Så ring
70 15 00 13
- (N)** Spørsmål om dette produktet? Ring
88 02 55 03
- (S)** Frågor om apparaten? Ring Kundservice
020 - 21 33 21
- (FIN)** Onko Sinulla kysyttävää tuotteesta? Soita
0203 77877



English

Lady Braun style

- ① Cord socket
- ② On/off switch
- ③ Shaving foil
- ④ Trimmers } Shaver head
- ⑤ Protective cap
- ⑥ Cleaning brush

Before starting off

Your Lady Braun style automatically adapts to any normal voltage (100–240 Volts). You can use it all over the world without having to re-set anything. When travelling abroad you may, however, need a plug adapter to fit local sockets.

The switch ② turns on both the foil shaving system and the two curved trimmers:

On = push switch up
Off = push switch down.

Before shaving remove the protective cap ⑤. Grasp both sides in the middle and lift gently off. After you are finished, always put it back on again to protect the foil against damage.

Before shaving, make sure your skin is completely dry.

Shaving

Hair removal with the combined actions of the Lady Braun style foil and trimmer systems is fast, thorough, yet gentle to skin: The curved trimmers ④ first raise all long hairs and cut them off. Then the flexible foil ③ follows to smooth away any stubble. For best results, hold the shaver so that about half of the foil and one of the trimmers are in contact with your skin, with the trimmer leading.

Guide the shaver slowly over your skin without pressing. The Lady Braun style gives you equal shaving action on both trimmer sides, so you can move the shaver forwards and backwards as you wish. The large, rounded shaver head lets you easily shave those difficult curvers and countours – on knees, ankles, underarms, bikini line, for instance.

When you are finished

After shaving, you may want to smooth on a little body cream or lotion. Caution, however, is advised in applying perfume or deodorants right away.

Store your Lady Braun style in its bag (pouch) when not in use. Besides offering practical storage, it also protects the foil against possible damage (a).

Keeping your Lady Braun style in good condition

Before cleaning, turn the shaver off. The foil of your Lady Braun style is a precision part. To avoid damaging it, be careful when handling the shaver head.

After every use: Remove the shaver head by pulling it off (b). Tap the bottom (not the metal parts) on a flat surface (c). Brush out the inside of the shaver head (d). Do not brush the shaving foil surface, because that may damage it. Then give the top of the shaver a quick cleaning with the brush. Replace the shaver head by clicking in place.

Do not shave with a damaged foil or cord. You may injure yourself if you do. If damage to the foil or the cord does occur, a replacement can be obtained via your authorised Braun dealer or a Braun Service Centre (see appendix). Do not wind the cord around the appliance.

To maintain the high performance of your shaver, please apply some vaseline approximately every 3 months or after each cleaning of the shaver. Take off the shaver head and apply a tiny amount of vaseline as indicated in illustration (e).

Subject to change without notice.

This product conforms to the EMC-Requirements as laid down by the Council Directive 89/336/EEC and to the Low Voltage Regulation (73/23 EEC).



Français

Lady Braun style

- ① Prise fil
- ② Interrupteur de mise en marche
- ③ Grille
- ④ Tondeuses } Tête de coup
- ⑤ Capot de protection
- ⑥ Brosse de nettoyage

Lady Braun style s'adapte automatiquement à toutes les tensions les plus répandues (100/240 Volts). Il peut être utilisé dans le monde entier sans que rien ne soit modifié sur l'appareil.

Cependant, il est possible qu'au cours d'un voyage à l'étranger il soit nécessaire de recourir à un adaptateur qui permette de brancher le fil sur une prise locale.

L'interrupteur ② commande la mise en marche de la grille et des 2 tondeuses courbes:

Mise en marche : pousser l'interrupteur vers le haut.
Arrêt : pousser l'interrupteur vers le bas.