

BRAUN

5612
5610



Flex XP

Type 5 720
Type 5 721



Braun Infoline

Deutsch	4
English	6
Français	8
Español	10
Português	12
Italiano	14
Nederlands	16
Dansk	18
Norsk	20
Svenska	22
Suomi	24
Türkçe	26
Ελληνικά	28

- (D)** Haben Sie Fragen zu diesem Produkt?
Rufen Sie an: (in Deutschland und Österreich zum Nulltarif)
00 800 27 28 64 63
00 800 BRAUNINFOLINE
- (CH)** **08 44 - 88 40 10**
- (E)** Servicio al consumidor para España:
901-11 61 84
- (P)** Serviço ao Consumidor para Portugal:
808 20 00 33
- (I)** Servizio consumatori:
(02) 6 67 86 23
- (NL)** Heeft u vragen over dit produkt?
Bel Braun Consumenten-infolijn:
(070) 4 13 16 58
- (B)** Vous avez des questions sur ce produit ?
Appelez Braun Belgique
(02) 711 92 11
- (DK)** Har du spørgsmål om produktet? Så ring
70 15 00 13
- (N)** Spørsmål om dette produktet? Ring
88 02 55 03
- (S)** Frågor om apparaten? Ring Kundservice
020 - 21 33 21
- (FIN)** Onko Sinulla kysyttävää tuotteesta? Soita
0203 77877
- (TR)** Türkiye'deki Tüketici Danışma Servisi:
0 800 261 19 53

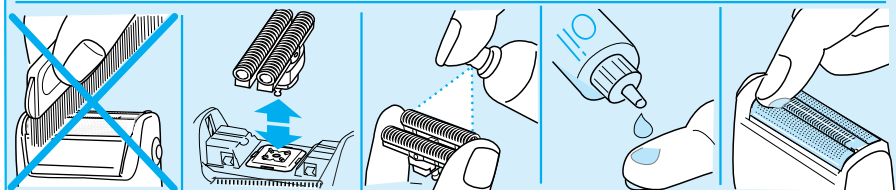
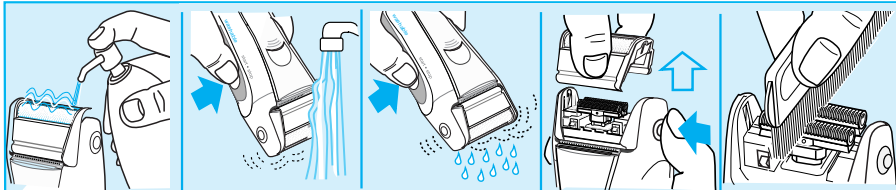
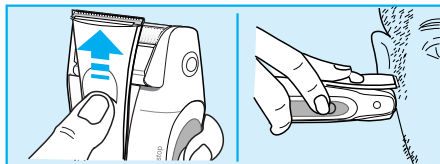
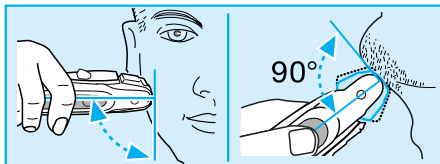
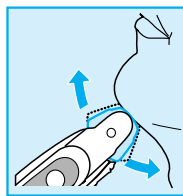
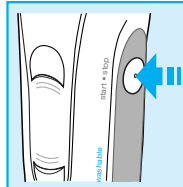
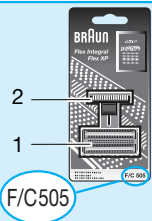
Internet:

www.braun.com

Flex 5612



Flex 5610



English

Our products are designed to meet the highest standards of quality, functionality and design. We hope you enjoy your new Braun shaver.

Warning

Your shaver is provided with a low voltage adapter or with a charging stand. In case of damage, you must not exchange or manipulate any part. Take the appliance to a Braun Service Centre.

Technical specifications

Model 5612: Wattage via cord set 7 W, automatic power supply 100–240 V ≈ / 50–60 Hz

Model 5610: Wattage via charging stand 8 W, automatic power supply 220–240 V ≈ / 50–60 Hz

Description

- 1 Shaver foil
- 2 Cutter block
- 3 Release button
- 4 On/off switch
- 5 Long hair trimmer
- 6 Charging light
- 7 Special power supply cord set (model 5612)
Charging stand (model 5610)

Charging the shaver

- **First charging:** Using the special power supply cord set/the charging stand, connect the shaver to the mains with the motor switched off. Charge it for at least 4 hours (special cord adapter and shaver might get warm). Once the shaver is completely charged, shave until fully discharged. Then recharge to full capacity again (subsequent charges will take about 1 hour).
- The charging light shows that the shaver is being charged. When the rechargeable battery is fully charged, the charging light goes off. If later on, the light comes on again, this indicates that the shaver is being recharged to maintain its full capacity.

- A full charge will give up to 40 minutes of cordless shaving time depending on your beard growth. However, the maximum battery capacity will only be reached after several charging/discharging cycles.
- Best environmental temperature range for charging is 15 °C to 35 °C.
- Model 5612 only: If the rechargeable battery is discharged, you may also shave with the shaver connected to the mains via the power supply cord set.

Shaving

Turn on the shaver («start»):

The pivoting cutting system automatically adjusts to every contour of your face.

Trimmer:

When the long hair trimmer is activated, it allows the controlled trimming of moustache or sideburns.

Tips for the perfect shave

- We recommend that you shave before washing, as the skin tends to be slightly swollen after washing.
- Hold the shaver at right angles (90°) to the skin. Stretch your skin and shave against the direction of beard growth.
- To ensure optimum shaving performance, we recommend to replace the shaver foil and cutter block every 18 months, or when the parts are worn.

Keeping your shaver in top shape

Cleaning under running water

After each shave, turn on the shaver and clean it under running hot water. Occasionally use soap (natural based liquid soap without particles and abrasive substances). Then rinse off all foam and let the shaver run for another moment.

Dry cleaning

Instead of cleaning under running water, you may dry clean your shaver: turn the shaver off, remove the shaver foil (shaver head must be in central position) and, using the brush, clean the cutter block and the inner area of the shaver head.

Do not clean the shaver foil with the brush.

General cleaning

About every four weeks, clean the cutter block with Braun cleaning agents.

Put a drop of light machine oil onto the long hair trimmer and shaver foil.

Replacing the shaving parts

The shaver foil and cutter block are precision parts that, in time, are subject to wear.

Replace your foil frame and cutter block every 18 months and get a 25% better shave.*

(Shaver foil and cutter block: part no. F/C505, available at your dealer or Braun Service Centres)

* (Overall evaluation from Braun users comparing their shave with new parts and those used for 18 months.)

Preserving the batteries

In order to maintain the optimum capacity of the rechargeable batteries, the shaver has to be fully discharged (by shaving) every 6 months approximately. Then recharge the shaver to full capacity again.

Do not expose the shaver to temperatures of more than 50 °C for longer periods of time.

Environmental notice

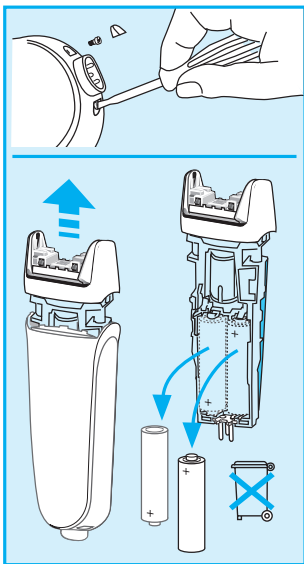
This appliance is provided with nickel-cadmium batteries. To protect the environment, do not dispose of this appliance in the household waste at the end of its useful life. Disposal can take place at a Braun Service Centre or appropriate collection sites.

However, if you prefer to dispose of the product yourself, remove the batteries as shown on page 31.

Subject to change without notice.

This product conforms to the EMC-Requirements as laid down by the Council Directive 89/336/EEC and to the Low Voltage Regulation (73/23 EEC).





Deutsch

Akku-Entsorgung am Ende der Lebensdauer des Gerätes

Vorsicht! Durch das Öffnen wird das Gerät zerstört. Keine Garantie für ein geöffnetes Gerät.

English

Battery removal at the end of the product's useful life

Caution: Opening the handle will destroy the appliance and invalidate the guarantee.

Français

Retrait des batteries à la fin de la durée de vie du produit

Attention : en ouvrant l'appareil, vous le détruisez et la garantie est invalidée.

Español

Extracción de la pila al finalizar la vida útil del producto

Aviso: La apertura del mango inutilizará el aparato e invalidará la garantía.

Português

Remoção da bateria no fim da vida útil do produto

Atenção: a abertura do cabo da escova destrói o aparelho e invalida a garantia.

Italiano

Eliminazione delle batterie alla fine del ciclo di vita del prodotto

Attenzione: l'apertura del corpo motore distrugge lo strumento ed invalida la garanzia del prodotto.

Nederlands

Het verwijderen van batterijen aan het eind van de nuttige levensduur van het apparaat

Waarschuwing: het openen van het aandrijfdeel zal het apparaat onbruikbaar maken en daarmee zal de garantie op het apparaat vervallen.

Dansk

Udtagelse af batteriet efter endt levetid

Være endvidere opmærksom på, at så snart batteriet fjernes eller forsøges taget ud, bortfalder garantien.

Norsk

Fjerning av batteriet ved slutten av apparatets levetid

Advarsel: Åpning av motordelen vil ødelegge apparatet, og gjøre garantien ugyldig.

Svenska

Att avlägsna batteriet när produkten är uttjänt

Varning: Genom att öppna motordelen förstörs apparaten och garantin slutar att gälla.

Suomi

Akun irrottaminen laitteen käyttöiän loputtua

Varoitus: runko-osan avaaminen tekee laitteesta käyttökelvottoman. Takuu ei koske avattua laitetta.

Türkçe

Cihazın ömrü bittiğinde pili çıkarma

Dikkat: Gövdesi açılmış cihaz garanti kapsamı dışındadır.

Ελληνικό

Για να βγάλετε τη μπαταρία μετά τη χρήσιμη ζωή της

Προσοχή: Ανοίγοντας τη λαβή η συσκευή καταστρέφεται και η εγγύηση παύει να ισχύει.

Deutsch

Garantie

Als Hersteller übernehmen wir für dieses Gerät – **nach Wahl des Käufers zusätzlich zu den gesetzlichen Gewährleistungsansprüchen gegen den Verkäufer** – eine Garantie von 2 Jahren ab Kaufdatum. Innerhalb dieser Garantiezeit beseitigen wir nach unserer Wahl durch Reparatur oder Austausch des Gerätes unentgeltlich alle Mängel, die auf Material- oder Herstellungsfehlern beruhen.

Die Garantie kann in allen Ländern in Anspruch genommen werden, in denen dieses Braun Gerät von uns autorisiert verkauft wird.

Von der Garantie sind ausgenommen: Schäden durch unsachgemäßen Gebrauch, normaler Verschleiß und Verbrauch sowie Mängel, die den Wert oder die Gebrauchstauglichkeit des Gerätes nur unerheblich beeinflussen. Bei Eingriffen durch nicht von uns autorisierte Braun Kundendienstpartner sowie bei Verwendung anderer als Original Braun Ersatzteile erlischt die Garantie.

Im Garantiefall senden Sie das Gerät mit Kaufbeleg bitte an einen autorisierten Braun Kundendienstpartner. Die Anschrift für Deutschland können Sie kostenlos unter 00800/27 28 64 63 erfragen.

English

Guarantee

We grant 2 years guarantee on the product commencing on the date of purchase. Within the guarantee period we will eliminate, free of charge, any defects in the appliance resulting from faults in materials or workmanship, either by repairing or replacing the complete appliance as we may choose.

This guarantee extends to every country where this appliance is supplied by Braun or its appointed distributor.

This guarantee does not cover: damage due to improper use, normal wear or use as well as defects that have a negligible effect on the value or operation of the appliance. The

guarantee becomes void if repairs are undertaken by unauthorised persons and if original Braun parts are not used.

To obtain service within the guarantee period, hand in or send the complete appliance with your sales receipt to an authorised Braun Customer Service Centre.

For UK only:

This guarantee in no way affects your rights under statutory law.

France

Garantie

Nous accordons une garantie de 2 ans sur ce produit, à partir de la date d'achat. Pendant la durée de la garantie, Braun prendra gratuitement à sa charge la réparation des vices de fabrication ou de matière en se réservant le droit de décider si certaines pièces doivent être réparées ou si l'appareil lui-même doit être échangé.

Cette garantie s'étend à tous les pays où cet appareil est commercialisé par Braun ou son distributeur exclusif.

Cette garantie ne couvre pas : les dommages occasionnés par une utilisation inadéquate et l'usure normale. Cette garantie devient caduque si des réparations ont été effectuées par des personnes non agréées par Braun et si des pièces de rechange ne provenant pas de Braun ont été utilisées.

Pour toute réclamation intervenant pendant la période de garantie, retournez ou rapportez l'appareil ainsi que l'attestation de garantie à votre revendeur ou à un Centre Service Agréé Braun.

Appelez au 01.47.48.70.00 pour connaître le Centre Service Agréé Braun le plus proche de chez vous.

Clause spéciale pour la France

Outre la garantie contractuelle exposée ci-dessus, nos clients bénéficient de la garantie légale des vices cachés prévue aux articles 1641 et suivants du Code civil.