

BRAUN

5775
5770



FLEX XP II

Type 5 724

www.braun.com/register

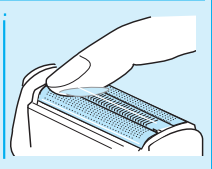
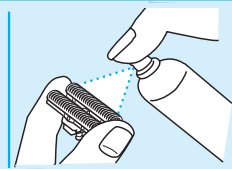
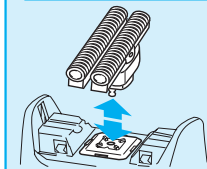
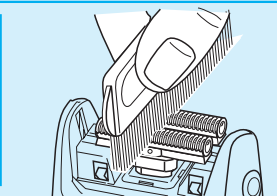
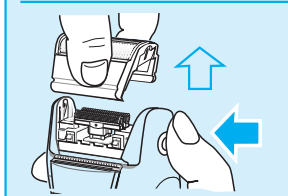
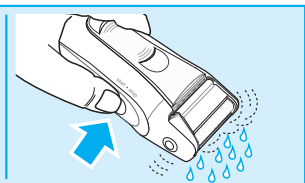
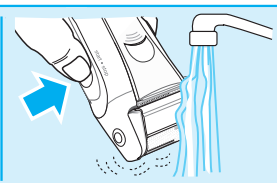
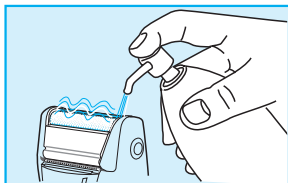
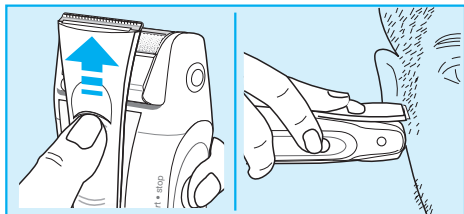
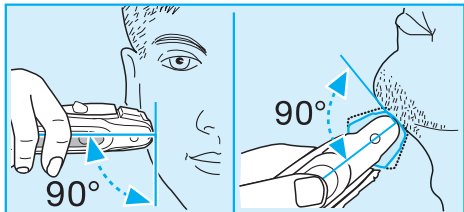
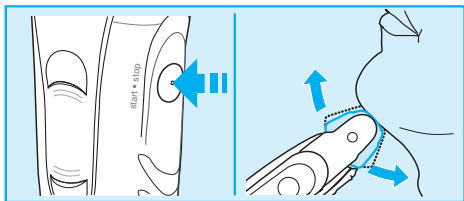
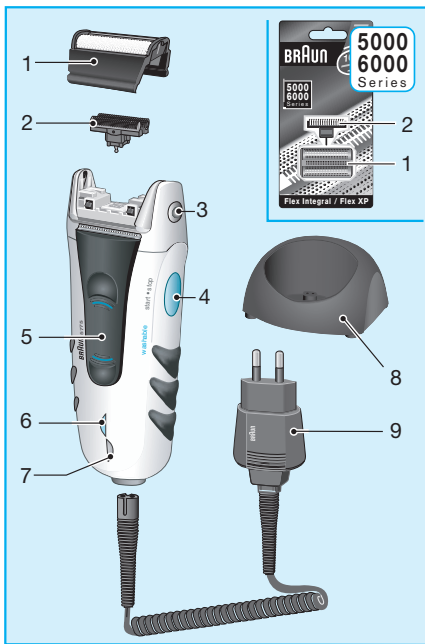
5-724-450/00/XI-03/G2
D/GB/F/E/P/I/NL/DK/N/S/FIN/TR/GR



Braun Infoline

Deutsch	4, 33, 37
English	6, 33, 37
Français	8, 33, 37
Español	10, 34, 37
Português	12, 34, 37
Italiano	14, 34, 37
Nederlands	16, 35, 37
Dansk	18, 35, 37
Norsk	20, 35, 37
Svenska	22, 36, 37
Suomi	24, 36, 37
Türkçe	26, 37
Ελληνικά	28, 36, 37

- (D)** Haben Sie Fragen zu diesem Produkt?
- (A)** Rufen Sie an (gebührenfrei):
00 800 27 28 64 63
00 800 BRAUNINFOLINE
- (CH)** **08 44 - 88 40 10**
- (E)** Servicio al consumidor para España:
901-11 61 84
- (P)** Serviço ao Consumidor para Portugal:
808 20 00 33
- (I)** Servizio consumatori:
(02) 6 67 86 23
- (NL)** Heeft u vragen over dit produkt?
Bel Braun Consumenten-infolijn:
(070) 4 13 16 58
- (B)** Vous avez des questions sur ce produit ?
Appelez Braun Belgique
(02) 711 92 11
- (DK)** Har du spørgsmål om produktet? Så ring
70 15 00 13
- (N)** Spørsmål om dette produktet? Ring
88 02 55 03
- (S)** Frågor om apparaten? Ring Kundservice
020 - 21 33 21
- (FIN)** Onko Sinulla kysyttävää tuotteesta? Soita
0203 77877
- (TR)** Müşteri Hizmetleri Merkezi:
0212 - 473 75 85



English

Our products are designed to meet the highest standards of quality, functionality and design. We hope you enjoy your new Braun shaver.

Warning

Your shaver is provided with a special cord set with integrated Safety Extra Low Voltage power supply. Therefore you must not exchange or manipulate any part of it. Otherwise there is a risk of electric shock.

Description

- 1 Shaver foil
- 2 Cutter block
- 3 Release button
- 4 On/off switch («start/stop»)
- 5 Long hair trimmer
- 6 Charging light (green)
- 7 Model 5775 only: Low charge light (red)
- 8 Model 5775 only: Charging stand
- 9 Special cord set

Charging the shaver

- When charging for the first time: Using the special cord set, connect the shaver/the charging stand with an electrical outlet. The shaver must be switched off. Charge it for at least 4 hours (low voltage adapter and shaver might get warm). Once the shaver is completely charged, shave until fully discharged. Then recharge to full capacity again (1 hour).
- A full charge will give up to 50 minutes of cordless shaving time depending on your beard growth. However, the maximum battery capacity will only be reached after several charging/discharging cycles.
- Best environmental temperature range for charging is 15 °C to 35 °C.
- When fully discharged, you may also shave with the shaver connected to an electrical outlet via the special cord set.

Indicator lights

The green charging light shows that the shaver is being charged. When the rechargeable battery is fully charged, the charging light goes off. If later on, the charging light comes on again, this indicates that the shaver is being recharged to maintain its full capacity.

Model 5775 only:

The red low-charge light glows when the battery capacity has dropped below 20% provided the shaver is switched on. The remaining capacity will then be sufficient for 2 to 3 shaves.

Shaving

Turn on the shaver («start»):
The pivoting cutting system automatically adjusts to every contour of your face.

Trimmer: When the long hair trimmer is activated, it allows the controlled trimming of moustache or sideburns.

Tips for the perfect shave

- We recommend that you shave before washing, as the skin tends to be slightly swollen after washing.
- Hold the shaver at right angles (90°) to the skin. Stretch your skin and shave against the direction of beard growth.
- To maintain 100% shaving performance replace your foil and cutterblock every 18 month or when worn.

Cleaning

Always unplug the appliance before cleaning.

Regular cleaning ensures better shaving performance. Rinsing the shaving head after each shave under hot running water is an easy and fast way to keep it clean:

- Switch the shaver on (cordless) and rinse the shaving head under hot running water. A natural based soap may also be used provided it contains no particles or abrasive substances. Rinse off all foam and let the shaver run for a few more seconds.
- Next switch the shaver off and press the release buttons. Lift the shaver foil off and pull the cutter block out. Then leave the disassembled shaving parts to dry.

Alternatively, you may clean the shaver using the brush provided:

- Switch the shaver off. Press the release buttons and lift shaver foil off.
- Using the brush, clean the cutter block and the inner area of the shaver head. However, do not clean the shaver foil with the brush as this may damage the foil.
- Clean the charging stand with a damp cloth. Unplug first.

Keeping your shaver in top shape

About every four weeks, clean the cutter block with Braun cleaning agents. Put a drop of light machine oil onto the long hair trimmer and the shaver foil.

Preserving the batteries

In order to maintain the optimum capacity of the rechargeable batteries, the shaver has to be fully discharged (through normal use) every 6 months approximately. Then recharge the shaver to full capacity. Do not expose the shaver to temperatures higher than 50 °C for extended periods of time.

Replacing the shaving parts

To maintain 100% shaving performance, replace your foil and cutter block every 18 months or when worn. Change both parts at the same time for a closer shave with less skin irritation.

(Shaver foil and cutter block: part no. 5000/6000)

Environmental notice

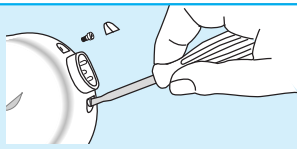
This appliance is provided with nickel-hydride rechargeable batteries. To protect the environment, do not dispose of the appliance in the household waste at the end of its useful life. Open the housing as shown on page 31, remove and dispose of the batteries at your retail store or at appropriate collection sites according to national or local regulations.

Subject to change without notice.

This product conforms to the EMC-Directive 89/336/EEC and to the Low Voltage Regulation 73/23 EEC.



Electric specifications see printing on the special cord set.



Deutsch

Akku-Entsorgung am Ende der Lebensdauer des Gerätes

Vorsicht! Durch das Öffnen wird das Gerät zerstört. Keine Garantie für ein geöffnetes Gerät.

English

Battery removal at the end of the product's useful life

Caution: Opening the handle will destroy the appliance and invalidate the guarantee.

Français

Retrait des batteries en fin de vie du produit

Attention : L'ouverture du corps du rasoir entraînera sa destruction et invalidera la garantie.

Español

Batería extraíble al final de su periodo vida

Precaución: la manipulación puede ocasionar daños a la afeitadora e invalidar la garantía.

Português

Bateria substituída no fim do ciclo de vida do produto

Precaução: Se abrir a Máquina irá destruí-la e invalidar a sua garantia.

Italiano

Eliminazione delle batterie alla fine del ciclo di vita del prodotto

Attenzione: l'apertura del corpo motore distrugge lo strumento ed invalida la garanzia del prodotto.

Nederlands

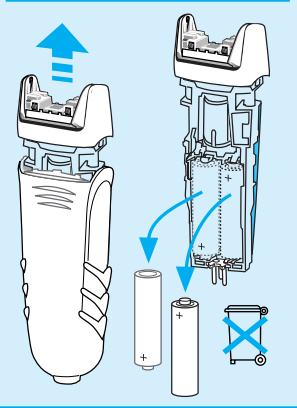
Het verwijderen van de batterij aan het eind van de nuttige levensduur van het apparaat

Let op: Door het openen van het apparaat wordt deze vernietigd en vervalt de garantie.

Dansk

Fjern batterierne når produktet er slidt op

Advarsel: Hvis du åbner shaveren ødelægges denne og garantien dækker ikke.



Deutsch

Garantie

Als Hersteller übernehmen wir für dieses Gerät – **nach Wahl des Käufers zusätzlich zu den gesetzlichen Gewährleistungsansprüchen gegen den Verkäufer** – eine Garantie von 2 Jahren ab Kaufdatum. Innerhalb dieser Garantiezeit beseitigen wir nach unserer Wahl durch Reparatur oder Austausch des Gerätes unentgeltlich alle Mängel, die auf Material- oder Herstellungsfehlern beruhen. Die Garantie kann in allen Ländern in Anspruch genommen werden, in denen dieses Braun Gerät von uns autorisiert verkauft wird.

Von der Garantie sind ausgenommen: Schäden durch unsachgemäßen Gebrauch, normaler Verschleiß und Verbrauch sowie Mängel, die den Wert oder die Gebrauchstauglichkeit des Gerätes nur unerheblich beeinflussen. Bei Eingriffen durch nicht von uns autorisierte Braun Kundendienstpartner sowie bei Verwendung anderer als Original Braun Ersatzteile erlischt die Garantie.

Im Garantiefall senden Sie das Gerät mit Kaufbeleg bitte an einen autorisierten Braun Kundendienstpartner. Die Anschrift für Deutschland können Sie kostenlos unter 00800/27 28 64 63 erfragen.

English

Guarantee

We grant 2 years guarantee on the product commencing on the date of purchase. Within the guarantee period we will eliminate, free of charge, any defects in the appliance resulting from faults in materials or workmanship, either by repairing or replacing the complete appliance as we may choose.

This guarantee extends to every country where this appliance is supplied by Braun or its appointed distributor.

This guarantee does not cover: damage due to improper use, normal wear or use as well as defects that have a negligible effect on the value or operation of the appliance.

The guarantee becomes void if repairs are undertaken by unauthorised persons and if original Braun parts are not used.

To obtain service within the guarantee period, hand in or send the complete appliance with your sales receipt to an authorised Braun Customer Service Centre.

For UK only:

This guarantee in no way affects your rights under statutory law.

Françæ

Garantie

Nous accordons une garantie de 2 ans sur ce produit, à partir de la date d'achat. Pendant la durée de la garantie, Braun prendra gratuitement à sa charge la réparation des vices de fabrication ou de matière en se réservant le droit de décider si certaines pièces doivent être réparées ou si l'appareil lui-même doit être échangé.

Cette garantie s'étend à tous les pays où cet appareil est commercialisé par Braun ou son distributeur exclusif.

Cette garantie ne couvre pas : les dommages occasionnés par une utilisation inadéquate et l'usure normale. Cette garantie devient caduque si des réparations ont été effectuées par des personnes non agréées par Braun et si des pièces de rechange ne provenant pas de Braun ont été utilisées.

Pour toute réclamation intervenant pendant la période de garantie, retournez ou rapportez l'appareil ainsi que l'attestation de garantie à votre revendeur ou à un Centre Service Agréé Braun.

Appelez au 01.47.48.70.00 pour connaître le Centre Service Agréé Braun le plus proche de chez vous.

Clause spéciale pour la France

Outre la garantie contractuelle exposée ci-dessus, nos clients bénéficient de la garantie légale des vices cachés prévue aux articles 1641 et suivants du Code civil.